

112365
 STATE OF ARIZONA
 County of Maricopa
 I hereby certify that the within instrument was filed and recorded at request of
City of Tempe
APR 25 1973-1123
 in Book Book 16
 on page 14
 Witness my hand and official seal the day and year above written.
 Notary Public
Joseph Macdonald

161-14

TORRE MOLINOS

A PLANNED RESIDENTIAL DEVELOPMENT OF PART OF
 THE E. 1/2 OF THE S.W. 1/4 OF THE S.E. 1/4 SECTION 24, T.1N, R.4E., G.&S.R.B.&M.
 MARICOPA COUNTY, ARIZONA
 FEBRUARY 1973
 SHEET 1 OF 2



DEDICATION

State of Arizona }
 County of Maricopa } ss

Know all men by these presents:
 That Arizona Title Insurance & Trust Company, an Arizona Corporation, as trustee, has divided under the name of Torre Molinos, part of the E. 1/2 of the S.W. 1/4 of the S.E. 1/4, Section 24, T.1N, R.4E., G.&S.R.B.&M., Maricopa County, as shown platted here on and here by publishes this plat as and for the plot of said Torre Molinos and hereby declares that said plot sets forth the location and gives the dimensions of the lots, streets, tracts, & private drives constituting same and that each lot, street and tract shall be known by the number, name, or letter given each respectively on said plat and that Arizona Title Insurance & Trust Company, as trustee, hereby dedicates to the public for use as such Broadway Road shown on said plat and included in the above described premises. An easement for public utilities is hereby granted across Tract G, Tract R and Tract E.
 All other roadways on said plat shall be known as private drives and nothing hereon written or set forth shall be construed to mean or constitute a dedication to the public of said roadways. Easements are dedicated for the use shown. An easement for public utilities, refuse collection, and other city services requiring the use of vehicles and equipment is hereby dedicated across all private drives. An easement for fire fighting equipment is hereby granted across tracts B, E, G, H, & I. A private utility service easement is hereby granted across all lots and tracts.
 In witness whereof:
 Arizona Title Insurance & Trust Company, an Arizona Corporation, as trustee, has hereunto caused its corporate seal to be affixed and the same to be attested by the signature of the undersigned officers hereunto duly authorized this 10th day of April, 1973.

ARIZONA TITLE INSURANCE & TRUST COMPANY, as trustee
 BY Stanley Mathisen VICE PRESIDENT ATTEST Stueley Mathisen ASST. SECRETARY

ACKNOWLEDGEMENT

State of Arizona }
 County of Maricopa } ss

On this 10th day of April, 1973 before me the undersigned officer appeared Stanley Mathisen & Stueley Mathisen who acknowledged themselves to be Vice President & Assistant Secretary respectively of Arizona Title Insurance & Trust Company, an Arizona Corporation and acknowledged that they as such officers, being duly authorized to do so executed the foregoing instrument for the purpose therein contained, by signing the name of the corporation, as trustee, by themselves such officers.
 In witness whereof:
 I hereunto set my hand and official seal.
 By Barbara Claster Notary Public My Commission Expires July 30, 1975

ENGINEER'S CERTIFICATE

I Marvin E. Larson hereby certify that I am a Registered Civil Engineer of the State of Arizona, that this map consisting of two sheets, correctly represents a survey made under my supervision during the month of January, 1973, that the survey is true and complete as shown that all the monuments shown actually exist or will be set as shown; that their positions are correctly shown and that said monuments are sufficient to enable the survey to be retraced.

Date April 6, 1973 Marvin E. Larson P.E.
APPROVALS
 Approved by the City of Tempe Arizona, this 8th day of April, 1973
Dick Ralphy Mayor Attest Virginia Thompson Clerk
 Approved by Blanchard City Engineer Date 4/23/73
 Approved by Blanchard Planning Department Date 4/23/73

NO.	R	Δ	T	L
1	95'	35°33'33"	30.46'	58.96'
2	170'	28°46'25"	35.78'	70.54'
3	100'	19°31'24"	17.20'	34.07'
4	100'	38°39'32"	35.05'	67.47'
5	70'	46°32'41"	30.11'	56.87'
6	100'	48°43'29"	40.12'	76.31'
7	100'	48°51'06"	40.25'	76.54'
8	100'	28°15'40"	25.18'	49.32'
9	1150'	33°41'29"	3.43'	6.76'
10	1150'	146°18'36"	37.98'	29.37'
11	1150'	30°00'01"	11.50'	18.06'
12	24.50'	90°00'00"	24.50'	38.48'

- Indicates Public Utilities Easement
- Indicates corner of this Development
- Private drive - Easement for public utilities and refuse collection front pick-up service varies, see Plat
- Indicates Public Utilities Easement
- Indicates 7.7 Transformer Easement

SCALE 1" = 30'

MATCH SHEET 2

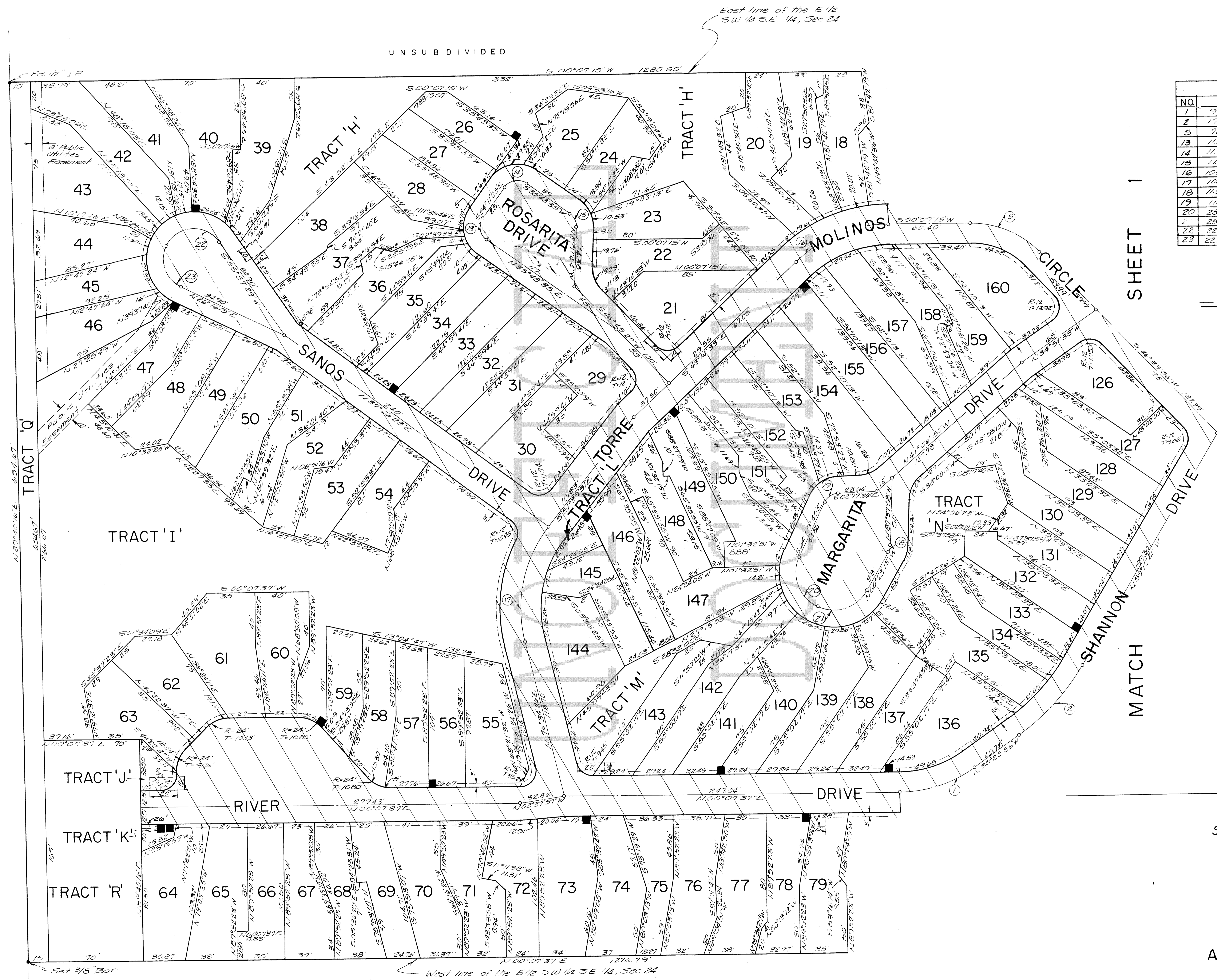
S-72.41
 AMERICAN ENGINEERING CO.
 PHOENIX ARIZONA

TORRE MOLINOS

FEBRUARY 1973

SHEET 20F2

STATE OF ARIZONA
 County of Maricopa
 I hereby certify that the within instrument was filed and recorded in the office of the County Recorder on the 14th day of APR 25 1973-10AM
 Witness my hand and official seal the day and year aforesaid.
 County Recorder
 Deputy Recorder



CURVE		DATA		
NO.	R	Δ	T	L
1	95'	35°33'33"	52.46'	58.96'
2	170'	25°46'25"	35.78'	70.54'
3	70'	46°32'41"	30.11'	56.87'
13	1150'	90°00'00"	1150'	18.06'
14	1150'	90°00'00"	1150'	18.06'
15	1150'	56°53'41"	6.24'	11.44'
16	100'	48°01'48"	39.76'	75.68'
17	100'	51°24'08"	48.52'	90.35'
18	115'	27°09'45"	2.78'	5.45'
19	115'	51°52'04"	6.89'	12.42'
20	2800'	90°00'00"	2800'	43.98'
21	2500'	88°18'33"	26.25'	42.18'
22	2250'	179°41'14"	38.73'	35.34'
23	2250'	90°00'00"	2250'	47.00'

- Indicates Public Utilities Easement.
- Indicates Corner of this Subdivision.
- Private Drive - Easement for Front Pick-Up Service of Public Utilities.
- Indicates 7'x7' Transformer Easement

SCALE 1"=30'

S-72.41
 AMERICAN ENGINEERING CO.
 PHOENIX ARIZONA

