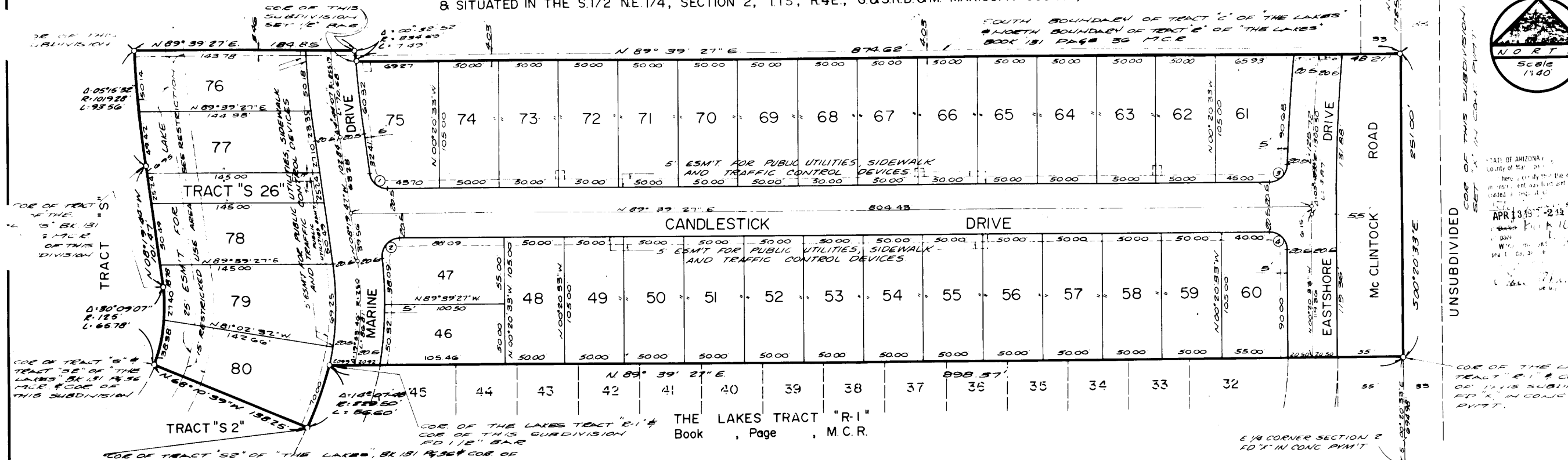


THE LAKES TRACT "R-2"

A SUBDIVISION & PLANNED RESIDENTIAL DEVELOPMENT OF PART OF TRACT "R" AND PART OF TRACT "C" OF "THE LAKES" BOOK 131 PAGE 36 M.C.R. & SITUATED IN THE S.1/2 NE.1/4, SECTION 2, T.1S, R.4E., G.&S.R.B.&M. MARICOPA COUNTY, ARIZONA

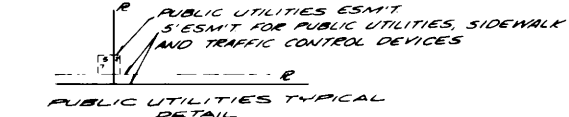
CURVE	DATA
1	87° 00' 46" 15' 21.47'
2	97° 43' 35" 15' 25.53'
3	89° 12' 49" 15' 23.09'
4	90° 00' 00" 15' 23.56'



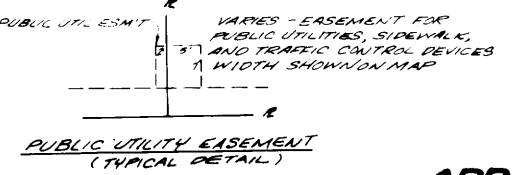
STATE OF ARIZONA
County of Maricopa
I, the undersigned, being duly qualified and duly sworn, do hereby certify that the within and foregoing plat was filed and recorded in the public office of the County Clerk of Maricopa County, Arizona, on this 13th day of April, 1972.

APR 13 1972

MINIMUM REQUIREMENTS
 Front yard _____ 20'
 Street side yard _____ 10'
 Interior side yard _____ 5'
 Rear yard _____ 10' except lake front lots - zero



NOTE:
Construction within easements shall be limited to utilities, wood, wire or removable section type fencing.



PUBLIC UTILITY EASEMENT (TYPICAL DETAIL)

DEDICATION

STATE OF ARIZONA SS
 COUNTY OF MARICOPA SS
 Know all men by these presents: That TRANSAMERICA TITLE INSURANCE COMPANY OF ARIZONA, an Arizona corporation, as trustee, has subdivided under the name of "THE LAKES TRACT "R-2", a part of TRACT "R" and part of TRACT "C" OF THE LAKES, BK. 131 Pg. 36 M.C.R. & situated in the S.1/2 NE.1/4, Sec. 2, T.1S, R.4E., G.&S.R.B.&M., Maricopa County, Arizona as shown platted hereon and hereby publishes this plat as and for the plat of said "THE LAKES TRACT "R-2" and hereby declares that said plat sets forth the location and gives the dimensions of the lots, streets & tracts constituting same and that each lot, street & tract shall be known by the number, name or letter given and respectively on said plat and the TRANSAMERICA TITLE INSURANCE COMPANY OF ARIZONA, as trustee, hereby dedicates to the public for use as such the streets shown on said plat and included in the above described premises. Easements are dedicated for purposes shown.

Witness whereof:
 TRANSAMERICA TITLE INSURANCE COMPANY OF ARIZONA, an Arizona corporation, as trustee, has hereunto set its corporate name to be signed and its corporate seal to be affixed and the same to be attested by the signature of the undersigned officer hereunto duly authorized this 12th day of January, 1972.

TRANSAMERICA TITLE INSURANCE COMPANY OF ARIZONA, AS TRUSTEE
 by Richard S. Patton
 TRUST OFFICER

ACKNOWLEDGEMENT

STATE OF ARIZONA SS
 COUNTY OF MARICOPA SS
 On this the 12th day of January, 1972, before me the undersigned officer appeared Richard S. Patton who acknowledged himself to be a trust officer of TRANSAMERICA TITLE INSURANCE COMPANY OF ARIZONA, an Arizona corporation, and acknowledged that he as a trust officer, being duly authorized so to do, executed the foregoing instrument for the purposes therein contained, by signing the name of the corporation, as trustee, by himself as a trust officer.
 In witness whereof:
 I hereunto set my hand and official seal.

by Richard S. Patton
 Notary Public
 My commission expires _____

APPROVALS

Approved by the Council of the City of Tempe, Arizona, this 15th day of August, 1971.
William J. Thompson
 ATTEST Virginia S. Thompson
 CLERK

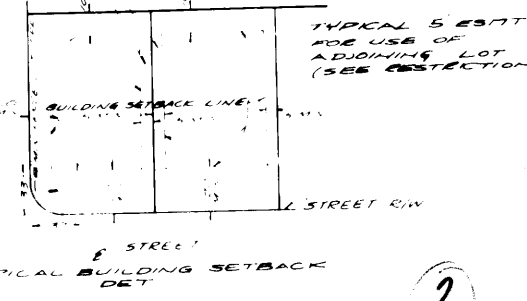
Approved by Henry J. Legge
 PLANNING DIRECTOR
 8-9-72
 DATE

ENGINEER'S CERTIFICATE

I, Henry J. Legge, hereby certify that I am a registered civil engineer of the state of Arizona; that this map, consisting of one sheet, correctly represents a survey made under my supervision during the month of JULY 1971; that the survey is true and complete as shown; that all the monuments shown actually exist or will be set as shown; that their positions are correctly shown and that said monuments are sufficient to enable the survey to be retraced.

DATED 11 Jan, 1972.
Henry J. Legge
 P.E.

NO STRUCTURE MAY BE PLACED IN 5' SIDE YARDS OR 5' ESMTS EXCEPT AS PERMITTED BY RESTRICTIONS OR BY CITY APPROVAL



2

5-71.24

