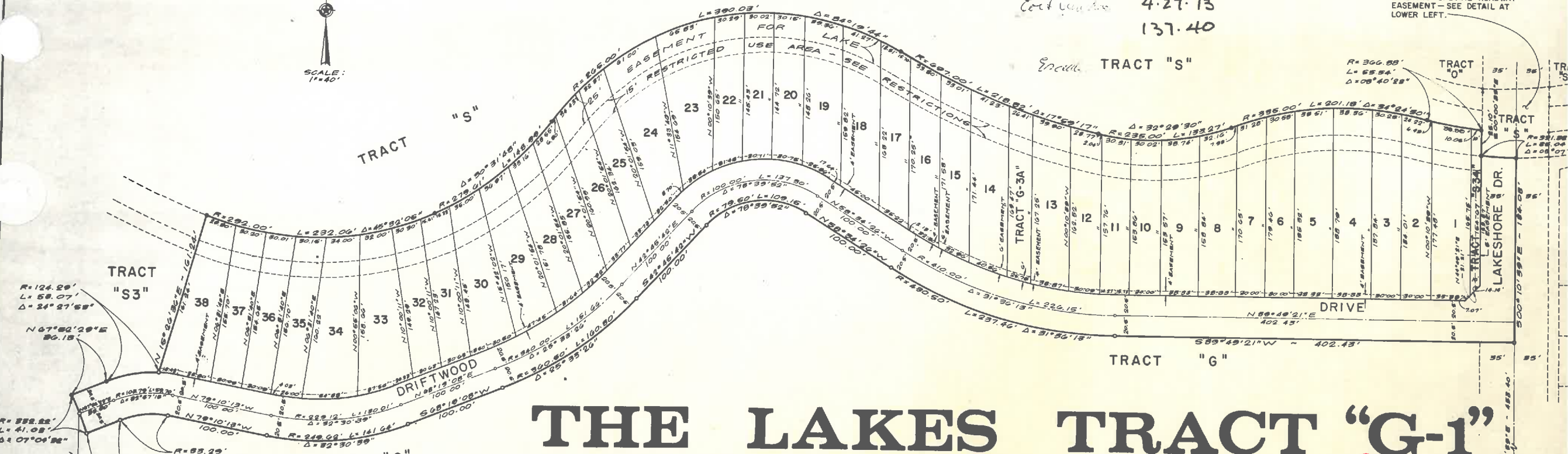




Cost 4.27.73
137.40

EXISTING SPECIAL ROADWAY EASEMENT - SEE DETAIL AT LOWER LEFT.

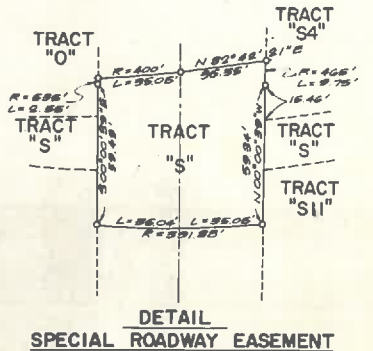


THE LAKES TRACT "G-1"

A SUBDIVISION AND PLANNED RESIDENTIAL DEVELOPMENT OF PART OF TRACTS "G" & "S3" OF THE LAKES, BOOK 131, PAGE 36, M.C.R. & SITUATED IN THE N.W. 1/4 OF SECTION 2, T.15S., R.4E., G.8S.R.B.8 M., MARICOPA COUNTY, ARIZONA

NOTE - ALL EASEMENTS SHOWN ARE EASEMENTS FOR PUBLIC UTILITIES, SIDEWALKS AND TRAFFIC CONTROL DEVICES UNLESS SHOWN OTHERWISE.

MINIMUM REQUIREMENTS
 * FRONT YARD ----- 20'
 SIDE YARD ----- ZERO
 REAR YARD ----- ZERO
 * DRIVEWAY - 24' MIN. LENGTH MEASURED FROM THE BACK OF CURB.



DEDICATION

STATE OF ARIZONA
 COUNTY OF MARICOPA
 I, Henry J. Logg, Trust Officer of TRANSAMERICA TITLE INSURANCE COMPANY OF ARIZONA, an Arizona corporation, do hereby dedicate to the public for use as such the streets and tracts shown on said plat and included in the above described premises. Easements are dedicated for purposes shown. In witness whereof, I have hereunto set my hand and official seal. This 4th day of April, 1971.

TRANSAMERICA TITLE INSURANCE COMPANY OF ARIZONA, AS TRUSTEE
 BY: Henry J. Logg
 TRUST OFFICER

ACKNOWLEDGEMENT

STATE OF ARIZONA
 COUNTY OF MARICOPA
 I, Henry J. Logg, Trust Officer of TRANSAMERICA TITLE INSURANCE COMPANY OF ARIZONA, an Arizona corporation, do hereby acknowledge that I am a Trust Officer of TRANSAMERICA TITLE INSURANCE COMPANY OF ARIZONA, an Arizona corporation, and acknowledged that I am a Trust Officer, being duly authorized as to do, executed the foregoing instrument for the purposes therein contained, by signing the name of the corporation, as trustee, by Henry J. Logg, Trust Officer.
 In witness whereof, I have hereunto set my hand and official seal. This 4th day of April, 1971.

ENGINEER'S CERTIFICATE

I, Henry J. Logg, hereby certify that I am a registered civil engineer of the state of Arizona; that this map, consisting of one sheet, correctly represents a survey made under my supervision during the month of April, 1971; that the survey is true and complete as shown; that all the monuments shown actually exist or will be set as shown; that their positions are correctly shown and that said monuments are sufficient to enable the survey to be retraced.
 DATED 4-13-71, 1971.
Henry J. Logg
 P.E.

APPROVALS

Approved by the Council of the City of Tempe, Arizona, this 5th day of April, 1971.
Paul Blum
 Mayor
 Approved by Henry J. Logg
 City Engineer
 Approved by _____
 Planning Director
 Date _____

- o - INDICATES CORNER OF THIS SUBDIVISION.
- o - INDICATES CORNER OF THIS SUBDIVISION AND CORNER OF TRACT "S" OF "THE LAKES" 131 / 36
- o - INDICATES CORNER OF THIS SUBDIVISION AND CORNER OF TRACT "S3" OF "THE LAKES" 131 / 36