

THE LAKES TRACT "F-3"

137-41

A SUBDIVISION & PLANNED RESIDENTIAL DEVELOPMENT OF PART OF TRACTS "F", "R", & "S-2" OF THE LAKES, BOOK 131 PAGE 36 M.C.R. & SITUATED IN THE S. 1/2 NE. 1/4, SECTION 2, T. 15., R. 4 E., G. & S. R. B. & M., MARICOPA COUNTY, ARIZONA

DEDICATION
 STATE OF ARIZONA }
 COUNTY OF MARICOPA }
 Know all men by these presents: That TRANSAMERICA TITLE INSURANCE COMPANY OF ARIZONA, an Arizona corporation, as trustee, has subdivided under the name of "THE LAKES TRACT "F-3" a part of TRACT "F", "R", & "S-2" of THE LAKES, Bk. 131 Pg. 36 M.C.R. & situated in the S. 1/2 N.E. 1/4, Section 2, T. 15., R. 4 E., G. & S. R. B. & M., Maricopa County, Arizona, as shown platted hereon and hereby publishes this plat as and for the plat of said "THE LAKES TRACT "F-3" and hereby declares that said plat sets forth the location and gives the dimensions of the lots, streets, tracts constituting same and that each lot, street, and tract shall be known by the number, name, or letter given each respectively on said plat and that TRANSAMERICA TITLE INSURANCE COMPANY OF ARIZONA, as trustee, hereby dedicates to the public for use as such the streets shown on said plat and included in the above described premises. Easements are dedicated for purposes shown. In witness whereof: TRANSAMERICA TITLE INSURANCE COMPANY OF ARIZONA, an Arizona corporation, as trustee, has hereunto caused its corporate name to be signed and its corporate seal to be affixed and the same to be attested by the signature of the undersigned officer thereunto duly authorized this 23rd day of MARCH 1971.

TRANSAMERICA TITLE INSURANCE COMPANY OF ARIZONA, AS TRUSTEE
 BY Benny Douglas
 TRUST OFFICER

ACKNOWLEDGEMENT
 STATE OF ARIZONA }
 COUNTY OF MARICOPA }
 On this 23rd day of March 1971 before me the undersigned officer appeared Benny Douglas who acknowledged himself to be a trust officer of TRANSAMERICA TITLE INSURANCE COMPANY OF ARIZONA, an Arizona corporation, and acknowledged that he as a trust officer, being duly authorized so to do, executed the foregoing instrument for the purposes therein contained, by signing the name of the corporation, as trustee, by himself as a trust officer. In witness whereof: I hereunto set my hand and official seal.

BY Kathleen Beese
 Notary Public
 8-6-74
 My commission expires

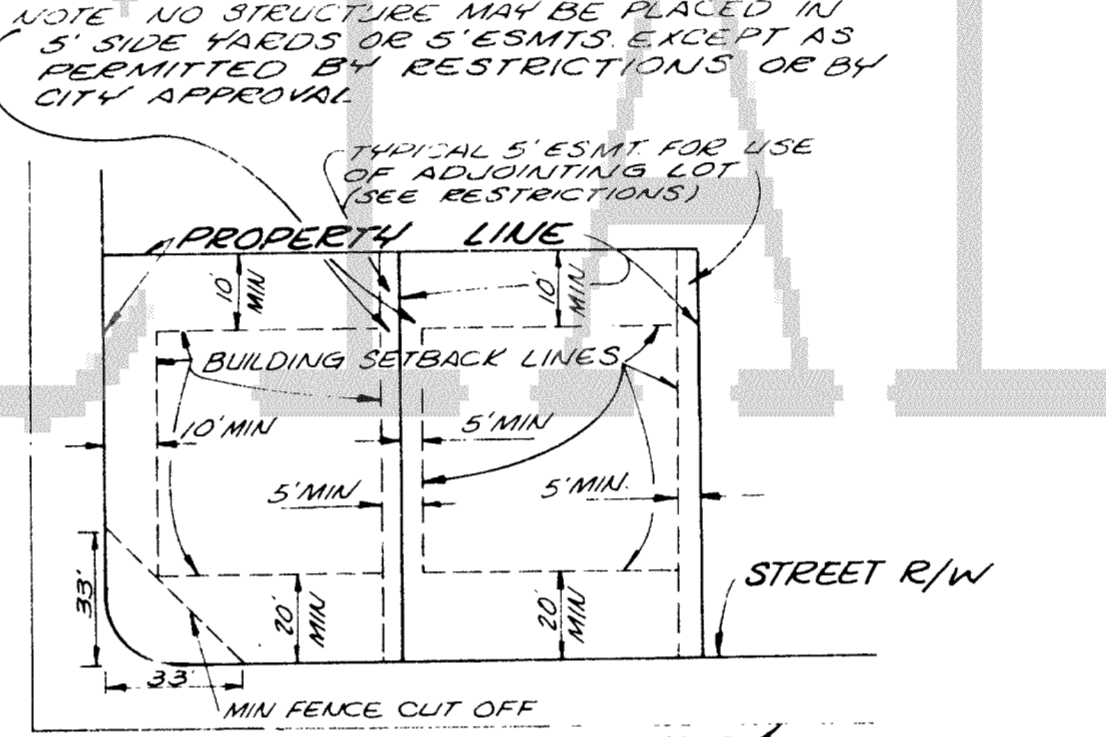
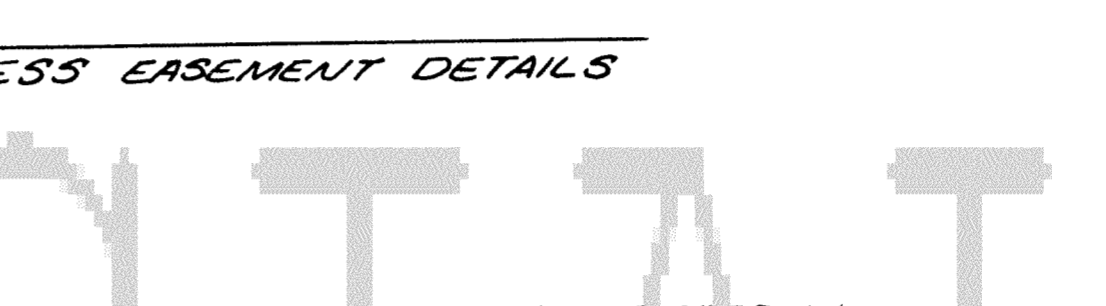
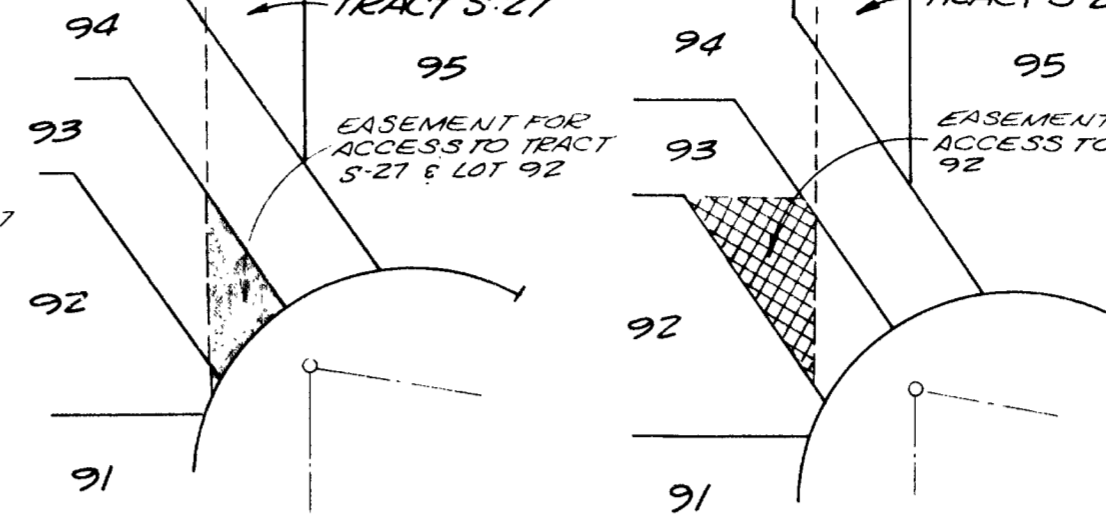
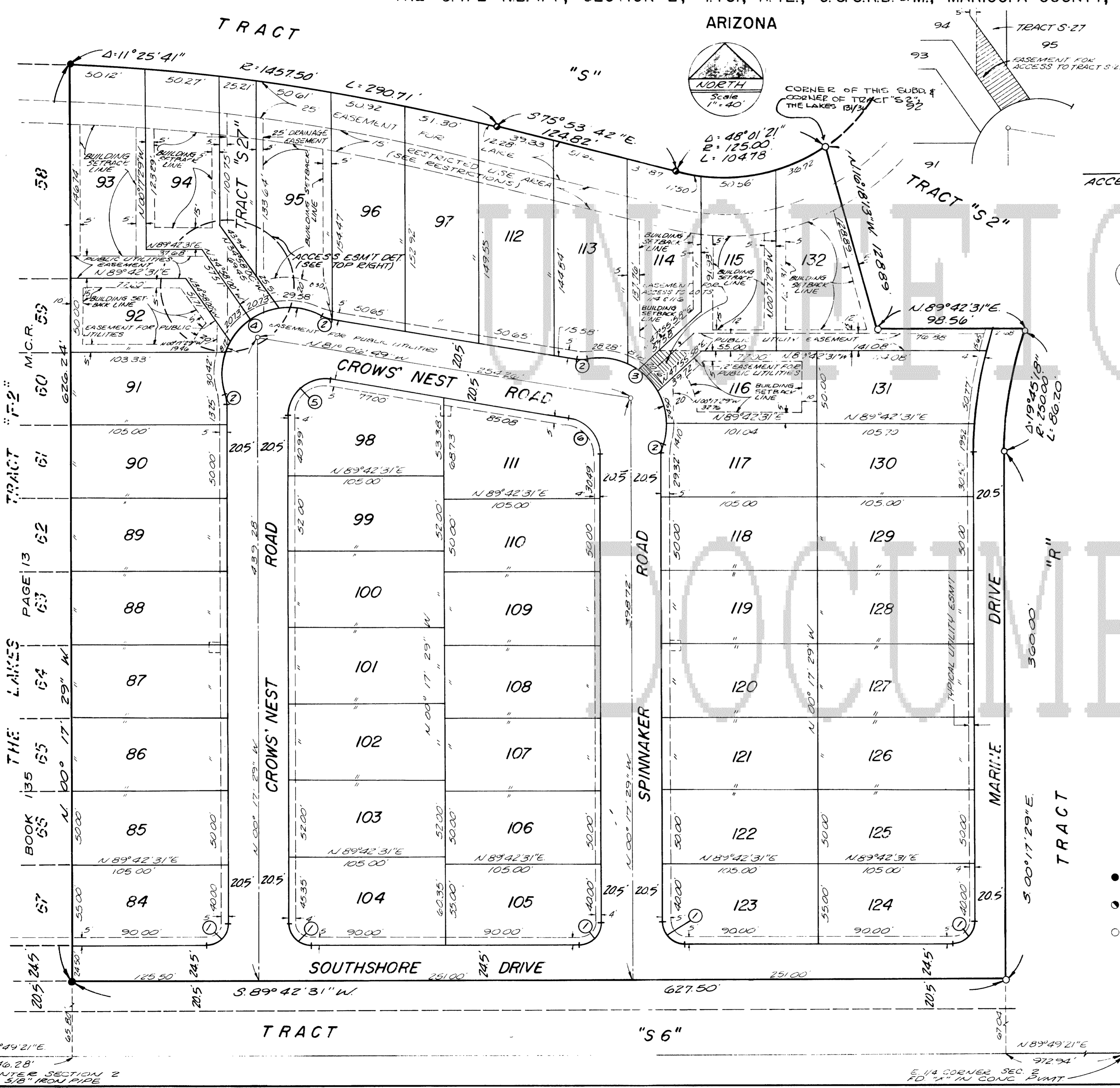
ENGINEER'S CERTIFICATE
 I, Henry L. Legge, hereby certify that I am a registered civil engineer of the state of Arizona; that this map, consisting of one sheet, correctly represents a survey made under my supervision during the month of March 1971; that the survey is true and complete as shown; that all the monuments shown actually exist or will be set as shown; that their positions are correctly shown and that said monuments are sufficient to enable the survey to be retraced.

DATED 3-10-71, 19
Henry L. Legge
 P. E.

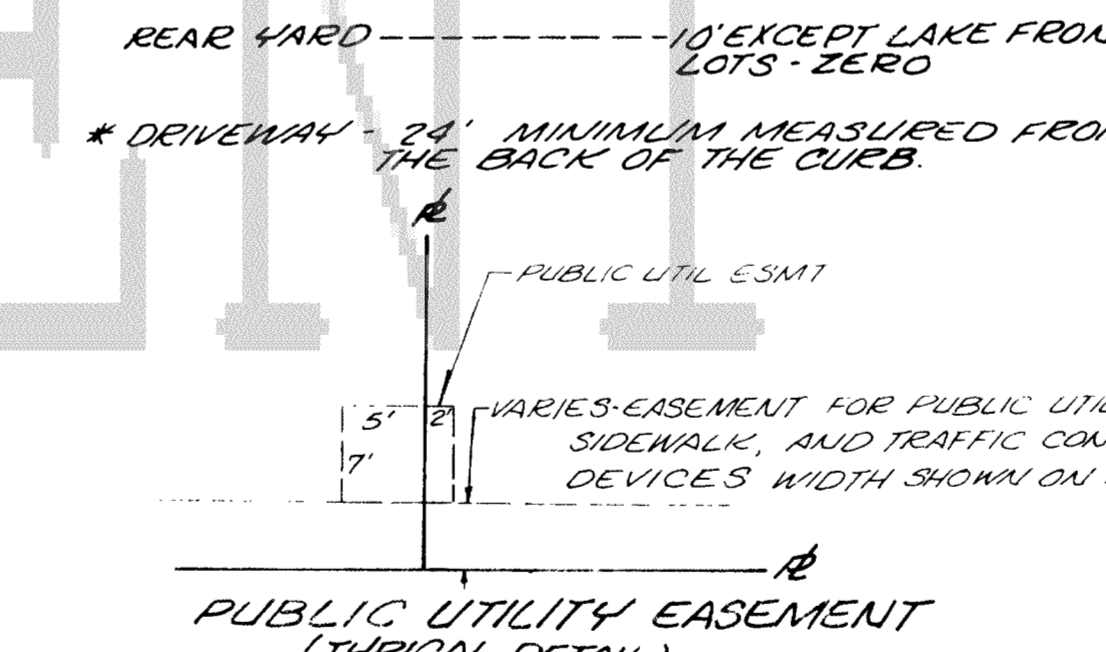
APPROVALS
 Approved by the Council of the City of Tempe, Arizona, this 25th day of MARCH 1971.

BY Walt Shuman MAYOR ATTEST Virginia Thompson CLERK
 Approved by Benny Douglas CITY ENGINEER 4-23-71 Date
 Approved by Ren Hill PLANNING DIRECTOR 4-26-71 DATE

83300 PAGED
 STATE OF ARIZONA }
 County of Maricopa }
 I hereby certify that the within instrument was filed and recorded at request of:
Coast Van Lee
 APR 27 1971
 in Book 131
 on page 105
 Witness my hand and official seal the day and year aforesaid.
 County Recorder
Eric
 By Eric



- MINIMUM REQUIREMENTS**
- * FRONT YARD - 20'
 - * STREET SIDE YARD - 10'
 - * INTERIOR SIDE YARD - 5'
 - * REAR YARD - 10' EXCEPT LAKE FRONT LOTS - ZERO
 - * DRIVEWAY - 24' MINIMUM MEASURED FROM THE BACK OF THE CURB.



- INDICATES CORNER OF "THE LAKES TRACT F-2" AND CORNER OF THIS SUBDIVISION
- INDICATES CORNER OF TRACT "S" OF "THE LAKES" AND CORNER OF THIS SUBDIVISION
- INDICATES CORNER OF THIS SUBDIVISION

NO	Δ	P	L
1	90° 00' 00"	15.00'	23.56'
2	20° 12' 19"	20.00'	7.05'
3	121° 13' 58"	45.00'	95.22'
4	139° 35' 18"	45.00'	109.63'
5	99° 10' 40"	25.00'	43.27'
6	80° 49' 20"	25.00'	35.26'