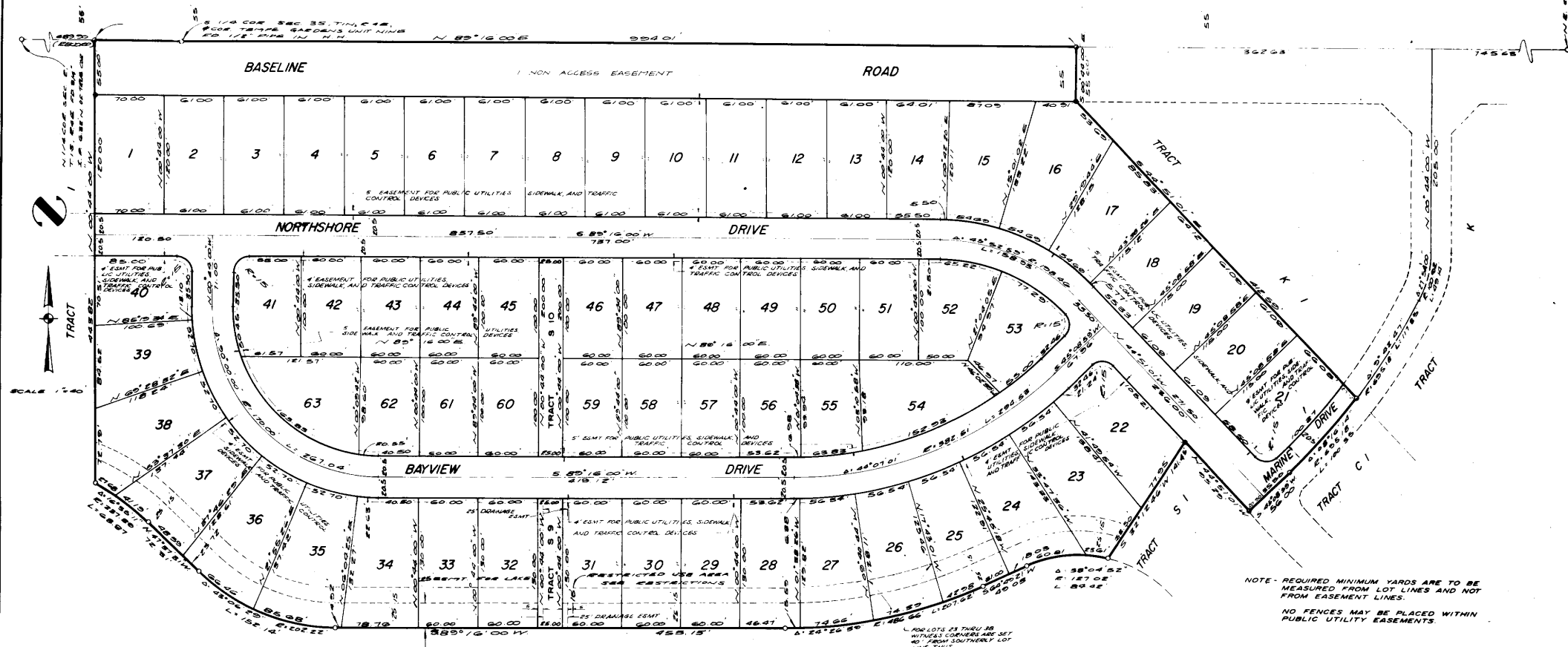


# THE LAKES TRACT "E"

A SUBDIVISION AND PLANNED RESIDENTIAL DEVELOPMENT OF TRACT "E" OF THE LAKES.

BOOK 131 PAGE 36 M.C.R. & SITUATED IN THE N 1/2 NE 1/4, SECTION 2, T.1S., R.4E., G. & S.R.B. & M., MARICOPA COUNTY, ARIZONA.

LAKE COUNTRY ESTATES BK 132 PG 29 M.C.R.      TEMPE GARDENS PAGE 130 UNIT NINE TRACT "A"      PARK RIVERA SOUTH TOWNHOUSES BK 127 P. 31 M.C.R.



NOTE - REQUIRED MINIMUM YARDS ARE TO BE MEASURED FROM LOT LINES AND NOT FROM EASEMENT LINES.  
NO FENCES MAY BE PLACED WITHIN PUBLIC UTILITY EASEMENTS.

### DEDICATION

STATE OF ARIZONA  
COUNTY OF MARICOPA SS  
Know all men by these presents:  
That TRANSAMERICA TITLE INSURANCE COMPANY OF ARIZONA, an Arizona corporation, as trustee has subdivided under the name of THE LAKES TRACT "E" in the N 1/2 NE 1/4, Section 2, T.1S., R.4E., G. & S.R.B. & M., Maricopa County, Arizona, as shown platted hereon and hereby publishes this plat as and for the plat of said "THE LAKES TRACT "E" and hereby declares that said plat sets forth the location and gives the dimensions of the lots, streets & tracts constituting same and that each lot, street & tract shall be known by the number, name or letter given each respectively on said plat and that TRANSAMERICA TITLE INSURANCE COMPANY OF ARIZONA, as trustee hereby dedicates to the public for use as such the streets shown on said plat and included in the above described premises. Easements are dedicated for purposes shown. In witness whereof:  
TRANSAMERICA TITLE INSURANCE COMPANY OF ARIZONA, an Arizona corporation, as trustee, has hereunto caused its corporate name to be signed and its corporate seal to be affixed and the same to be attested by the signature of the undersigned officer thereunto duly authorized this \_\_\_\_\_ day of \_\_\_\_\_ 1970

TRANSAMERICA TITLE INSURANCE COMPANY OF ARIZONA, AS TRUSTEE  
BY \_\_\_\_\_ TRUST OFFICER

### ACKNOWLEDGEMENT

STATE OF ARIZONA  
COUNTY OF MARICOPA SS  
On this the 12th day of September, before me the undersigned officer appeared \_\_\_\_\_ who acknowledged himself to be a Trust Officer of TRANSAMERICA TITLE INSURANCE COMPANY OF ARIZONA, an Arizona corporation, and acknowledged that he as a trust officer, being duly authorized so to do, executed the foregoing instrument for the purpose therein contained, by signing the name of the corporation, as trustee, by himself as a trust officer.  
In witness whereof:  
I hereunto set my hand and official seal.

BY \_\_\_\_\_ Notary Public My commission expires \_\_\_\_\_

### CERTIFICATION

This is to certify that the survey and subdivision of the premises described and platted hereon were made under my direction during the month of July, 1970

BY \_\_\_\_\_ Registered Civil Engineer 2408 R.C.E. No.

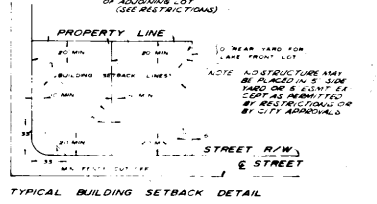
### APPROVALS

Approved by the Council of the City of Tempe, Arizona, this \_\_\_\_\_ day of \_\_\_\_\_ 1970

BY \_\_\_\_\_ MAYOR ATTEST \_\_\_\_\_ CLERK

Approved by \_\_\_\_\_ CITY ENGINEER Date \_\_\_\_\_

Approved by \_\_\_\_\_ PLANNING DIRECTOR Date \_\_\_\_\_



MINIMUM REQUIREMENTS  
FRONT YARD - 30'  
STREET SIDE YARD - 10'  
INTERIOR SIDE YARD - 10'  
REAR YARD - 30', EXCEPT LAKE FRONT LOTS - ZERO

11-4-70  
134/14

Indicates corner of this subdivision & corner of Tract "E" of THE LAKES.  
Indicates corner of this subdivision - set 1/2" bar, unless otherwise indicated.  
Indicates corner of this subdivision & corner of Tract "E" of THE LAKES - set 1/2" bar.