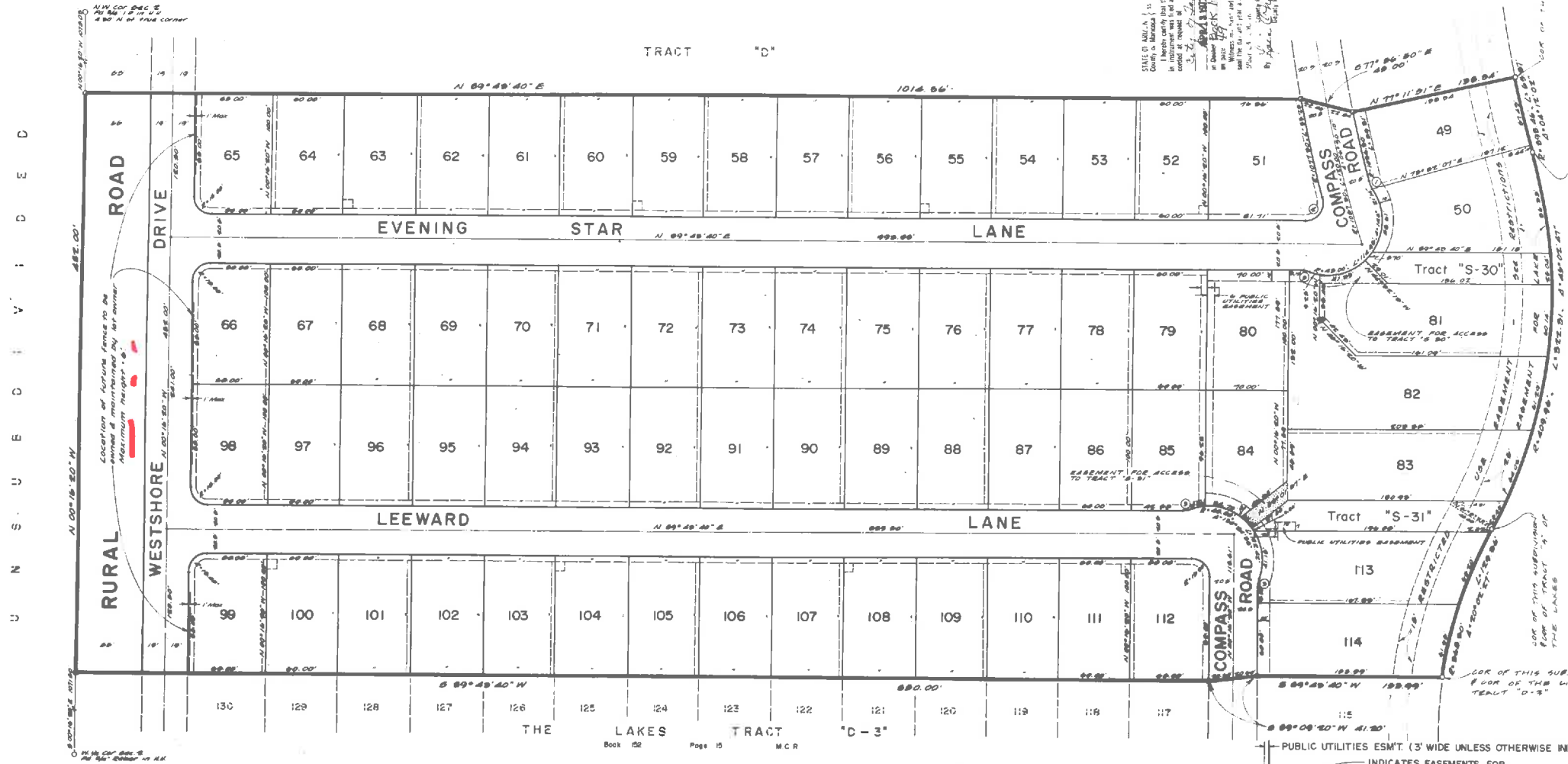




THE LAKES TRACT "D-2"

A SUBDIVISION AND PLANNED RESIDENTIAL DEVELOPMENT OF PART OF TRACT "D" OF "THE LAKES", Book 131, Page 36 M.C.R. AND SITUATED IN THE N.W. 1/4 OF SECTION 2, T.15, R.4E., G. & S.R.B. & M., MARICOPA COUNTY, ARIZONA.



DEDICATION

STATE OF ARIZONA } SS
COUNTY OF MARICOPA }
KNOW ALL MEN BY THESE PRESENTS:
THAT TRANSAMERICA TITLE INSURANCE COMPANY OF ARIZONA, AN ARIZONA CORPORATION, AS TRUSTEE, HAS SUBDIVIDED UNDER THE NAME OF "THE LAKES TRACT "D-2", A PART OF TRACT "D" OF "THE LAKES", Book 131, Page 36 M.C.R. AND SITUATED IN THE N.W. 1/4 OF SECTION 2, T.15, R.4E., G. & S.R.B. & M., MARICOPA COUNTY, ARIZONA, AS SHOWN PLATTED HEREON AND HEREBY PUBLISHES THIS PLAT AS AND FOR THE PLAT OF SAID "THE LAKES TRACT "D-2", AND HEREBY DECLARES THAT SAID PLAT SETS FORTH THE LOCATION AND GIVES THE DIMENSIONS OF THE LOTS, STREETS & TRACTS CONSTITUTING SAME AND THAT EACH LOT, STREET AND TRACT SHALL BE KNOWN BY THE NUMBER, NAME, OR LETTER GIVEN EACH RESPECTIVELY ON SAID PLAT AND THAT TRANSAMERICA TITLE INSURANCE COMPANY OF ARIZONA, AS TRUSTEE, HEREBY DEDICATES TO THE PUBLIC FOR USE AS SUCH THE STREETS SHOWN ON SAID PLAT AND INCLUDED IN THE ABOVE DESCRIBED PREMISES.
EASEMENTS ARE DEDICATED FOR THE PURPOSES SHOWN.
IN WITNESS WHEREOF:
TRANSAMERICA TITLE INSURANCE COMPANY OF ARIZONA, AN ARIZONA CORPORATION, AS TRUSTEE, HAS HEREUNTO CAUSED ITS CORPORATE SEAL TO BE AFFIXED AND THE SAME TO BE ATTESTED BY THE SIGNATURE OF THE UNDERSIGNED OFFICER THEREUNTO DULY AUTHORIZED THIS 19 DAY OF JANUARY, 1973.
TRANSAMERICA TITLE INSURANCE COMPANY OF ARIZONA, AS TRUSTEE,
BY Richard B. Sutton
TRUST OFFICER

ACKNOWLEDGEMENT

STATE OF ARIZONA } SS
COUNTY OF MARICOPA }
ON THIS 19 DAY OF JANUARY, 1973, BEFORE ME THE UNDERSIGNED OFFICER APPEARED Richard B. Sutton WHO ACKNOWLEDGED HIMSELF TO BE A TRUST OFFICER OF TRANSAMERICA TITLE INSURANCE COMPANY OF ARIZONA, AN ARIZONA CORPORATION, AND ACKNOWLEDGED THAT HE AS A TRUST OFFICER, BEING DULY AUTHORIZED SO TO DO, EXECUTED THE FOREGOING INSTRUMENT FOR THE PURPOSES THEREIN CONTAINED, BY SIGNING THE NAME OF THE CORPORATION, AS TRUSTEE, BY HIMSELF AS A TRUST OFFICER.

IN WITNESS WHEREOF:
I HEREBY SET MY HAND AND OFFICIAL SEAL.

BY Kenneth D. Turich Notary Public
NOTARY PUBLIC MY COMMISSION EXPIRES

ENGINEER'S CERTIFICATE

I, Henry J. Lodge, HEREBY CERTIFY THAT I AM A REGISTERED CIVIL ENGINEER OF THE STATE OF ARIZONA; THAT THIS MAP, CONSISTING OF ONE SHEET, CORRECTLY REPRESENTS A SURVEY MADE UNDER MY SUPERVISION DURING THE MONTH OF DECEMBER, 1972; THAT THE SURVEY IS TRUE AND COMPLETE AS SHOWN; THAT ALL THE MONUMENTS SHOWN ACTUALLY EXIST OR WILL BE SET AS SHOWN; THAT THEIR POSITIONS ARE CORRECTLY SHOWN AND THAT SAID MONUMENTS ARE SUFFICIENT TO ENABLE THE SURVEY TO BE RETRACED.

DATED 12/20/72, 1972
Henry J. Lodge
P.E.

NO.	BEARING	LENGTH	RADIUS
1	S 89° 49' 40" W	1014.86'	1014.86'
2	S 89° 49' 40" W	1014.86'	1014.86'
3	S 89° 49' 40" W	1014.86'	1014.86'

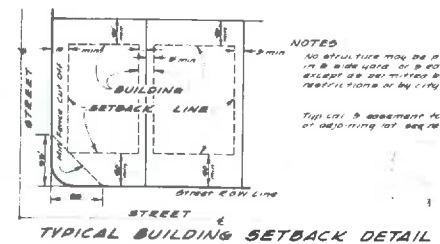
P.U. INDICATES PUBLIC UTILITIES EASEMENT

- INDICATES CORNER OF THIS SUBDIVISION & CORNER OF "THE LAKES TRACT "D-3" FOUND 1/2" IRON BAR, UNLESS OTHERWISE INDICATED.
- INDICATES CORNER OF THIS SUBDIVISION - SET 1/2" IRON BAR, UNLESS OTHERWISE INDICATED.
- INDICATES EASEMENT FOR PUBLIC UTILITIES, SIDEWALKS, TRAFFIC CONTROL DEVICES, ACCESS TO RESPECTIVE TRACTS & DRAINAGE.

APPROVALS

APPROVED BY THE COUNCIL OF THE CITY OF TEMPE ARIZONA, THIS 25th DAY OF JANUARY, 1973.
BY Della Thompson Mayor
APPROVED BY Don Hill City Engineer
APPROVED BY Don Hill Planning Director

INDICATES EASEMENTS FOR PUBLIC UTILITIES, SIDEWALKS, AND TRAFFIC CONTROL DEVICES & ARE 5' WIDE, UNLESS OTHERWISE INDICATED.
NOTE: NO WALL OR OTHER OBSTRUCTION TO BE BUILT ACROSS STREET SIDE OF 7'-7" PUBLIC UTILITIES EASEMENT.
NOTE: CONSTRUCTION WITHIN EASEMENTS SHALL BE LIMITED TO UTILITIES AND WOOD, WIRE OR REMOVABLE SECTION TYPE FENCINGS.



MINIMUM REQUIREMENTS
Front Yard 10'
Street Side Yard 10'
Interior Side Yard 5'
Rear Yard 10' Except lake
Front lots - zero