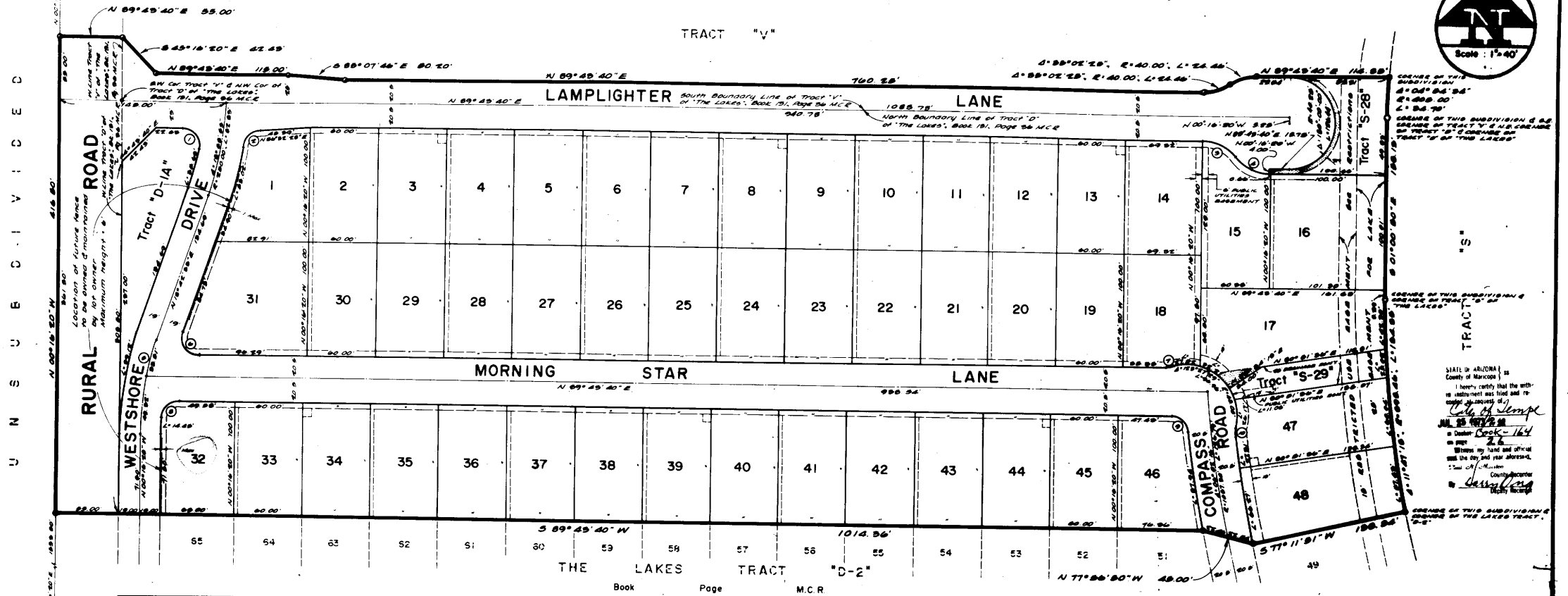


THE LAKES TRACT "D-1"

A SUBDIVISION AND PLANNED RESIDENTIAL DEVELOPMENT OF PART OF TRACTS "D" & "V" OF "THE LAKES", Book 131, Page 36, M.C.R. AND SITUATED IN THE N.W. 1/4 OF SECTION 2, T. 15S., R. 4E., G. & S.R.B. & M., MARICOPA COUNTY, ARIZONA.



NO.	BEARING	LENGTH	CHORD BEARING	CHORD LENGTH
1	18.00	82.87	100° 07' 27"	82.87
2	18.00	80.78	79° 07' 24"	80.78
3	88.00	82.88	81° 47' 37"	82.88
4	40.00	86.16	81° 47' 37"	86.16
5	80.00	82.88	18° 28' 39"	82.88
6	12.00	82.88	108° 28' 39"	82.88
7	20.00	1.08	80° 12' 18"	1.08
8	18.00	82.88	86° 28' 00"	82.88
9	18.00	81.77	89° 09' 01"	81.77
10	80.00	7.90	70° 52' 42"	7.90

DEDICATION
STATE OF ARIZONA } SS
COUNTY OF MARICOPA }
KNOW ALL MEN BY THESE PRESENTS: THAT TRANSAMERICA TITLE INSURANCE COMPANY OF ARIZONA, AN ARIZONA CORPORATION, AS TRUSTEE, HAS SUBDIVIDED UNDER THE NAME OF "THE LAKES TRACT 'D-1'", A PART OF TRACT "D" OF "THE LAKES", Book 131, Page 36, M.C.R. AND SITUATED IN THE N.W. 1/4 OF SECTION 2, T. 15S., R. 4E., G. & S.R.B. & M., MARICOPA COUNTY, ARIZONA, AS SHOWN PLATTED HEREON AND HEREBY PUBLISHES THIS PLAT AS AND FOR THE PLAT OF SAID "THE LAKES TRACT 'D-1'", AND HEREBY DECLARES THAT SAID PLAT SETS FORTH THE LOCATION AND GIVES THE DIMENSIONS OF THE LOTS, STREETS & TRACTS CONSTITUTING SAME AND THAT EACH LOT, STREET AND TRACT SHALL BE KNOWN BY THE NUMBER, NAME OR LETTER GIVEN EACH RESPECTIVELY ON SAID PLAT AND THAT TRANSAMERICA TITLE INSURANCE COMPANY OF ARIZONA, AS TRUSTEE, HEREBY DEDICATES TO THE PUBLIC FOR USE AS SUCH THE STREETS SHOWN ON SAID PLAT AND INCLUDED IN THE ABOVE DESCRIBED PREMISES. TRANSAMERICA TITLE INSURANCE COMPANY OF ARIZONA, AS TRUSTEE, ALSO DEDICATES TRACT "D-1A" TO THE PUBLIC FOR ROADWAY PURPOSES. EASEMENTS ARE DEDICATED FOR THE PURPOSES SHOWN. IN WITNESS WHEREOF: TRANSAMERICA TITLE INSURANCE COMPANY OF ARIZONA, AN ARIZONA CORPORATION, AS TRUSTEE, HAS HEREUNTO CAUSED ITS CORPORATE SEAL TO BE AFFIXED AND THE SAME TO BE ATTESTED BY THE SIGNATURE OF THE UNDERSIGNED OFFICER THEREUNTO DULY AUTHORIZED THIS DAY OF JANUARY, 1973. TRANSAMERICA TITLE INSURANCE COMPANY OF ARIZONA, AS TRUSTEE. BY: *[Signature]* TRUST OFFICER

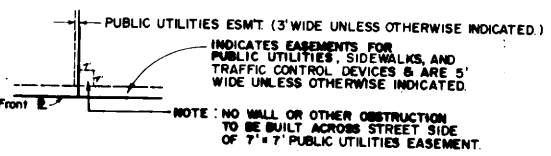
ACKNOWLEDGEMENT
STATE OF ARIZONA } SS
COUNTY OF MARICOPA }
ON THIS THE DAY OF JANUARY, 1973, BEFORE ME THE UNDERSIGNED OFFICER APPEARED *[Signature]* WHO ACKNOWLEDGED HIMSELF TO BE A TRUST OFFICER OF TRANSAMERICA TITLE INSURANCE COMPANY OF ARIZONA, AN ARIZONA CORPORATION, AND ACKNOWLEDGED THAT HE AS A TRUST OFFICER, BEING DULY AUTHORIZED SO TO DO, EXECUTED THE FOREGOING INSTRUMENT FOR THE PURPOSES THEREIN CONTAINED, BY SIGNING THE NAME OF THE CORPORATION, AS TRUSTEE, BY HIMSELF AS A TRUST OFFICER.

IN WITNESS WHEREOF: I HEREBUNTO SET MY HAND AND OFFICIAL SEAL. BY: *[Signature]* NOTARY PUBLIC MY COMMISSION EXPIRES

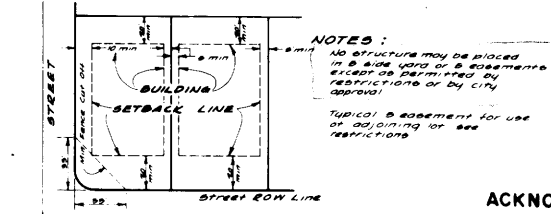
ENGINEER'S CERTIFICATE
I, *[Signature]*, HEREBY CERTIFY THAT I AM A REGISTERED CIVIL ENGINEER OF THE STATE OF ARIZONA; THAT THIS MAP, CONSISTING OF ONE SHEET, CORRECTLY REPRESENTS A SURVEY MADE UNDER MY SUPERVISION DURING THE MONTH OF JANUARY, 1973; THAT THE SURVEY IS TRUE AND COMPLETE AS SHOWN; THAT ALL THE MONUMENTS SHOWN ACTUALLY EXIST OR WILL BE SET AS SHOWN; THAT THEIR POSITIONS ARE CORRECTLY SHOWN AND THAT SAID MONUMENTS ARE SUFFICIENT TO ENABLE THE SURVEY TO BE RETRACED. DATED 13 Jan 1, 1973. *[Signature]* P.E.

APPROVALS
APPROVED BY THE COUNCIL OF THE CITY OF TEMPE ARIZONA, THIS DAY OF JANUARY, 1973. BY: *[Signature]* MAYOR ATTEST *[Signature]* CLERK
APPROVED BY: *[Signature]* CITY ENGINEER DATE 7/24/73
APPROVED BY: *[Signature]* PLANNING DIRECTOR DATE

● INDICATES CORNER OF THIS SUBDIVISION - SET 1/2" IRON BAR, UNLESS OTHERWISE INDICATED.



NOTE: CONSTRUCTION WITHIN EASEMENTS SHALL BE LIMITED TO UTILITIES AND WOOD, WIRE OR REMOVABLE SECTION TYPE FENCING.
INDICATES EASEMENT FOR PUBLIC UTILITIES, SIDEWALKS, TRAFFIC CONTROL DEVICES, & ACCESS TO RESPECTIVE TRACTS.



● INDICATES CORNER OF THIS SUBDIVISION & CORNER OF "THE LAKES TRACT 'D-2'" - FOUND 1/2" IRON BAR, UNLESS OTHERWISE INDICATED.

DEDICATION
STATE OF ARIZONA } SS
COUNTY OF MARICOPA }
KNOW ALL MEN BY THESE PRESENTS: THAT US LIFE TITLE COMPANY OF ARIZONA, AN ARIZONA CORPORATION, AS TRUSTEE, THE OWNER OF TRACT "V" OF "THE LAKES", Book 131, Page 36 OF MAPS, M.C.R. DOES HEREBY SUBMIT A PORTION OF SAID TRACT "V" TO THIS PLAT OF "THE LAKES TRACT 'D-1'" AND HEREBY DEDICATES THAT PORTION OF TRACT "V" OF "THE LAKES", LOCATED WITHIN THE BOUNDARIES OF LAMPLIGHTER LANE AS SHOWN HEREON FOR STREET PURPOSES AND FOR PUBLIC UTILITY PURPOSES, AND HEREBY DECLARES THAT PORTION OF SAID TRACT "V" OF "THE LAKES" LYING WITHIN THE BOUNDARIES OF TRACT "S-28" AS SHOWN ON THIS PLAT OF "THE LAKES TRACT 'D-1'" SHALL HEREAFTER BECOME A PART OF SAID TRACT "S-28". IN WITNESS WHEREOF: US LIFE TITLE COMPANY OF ARIZONA, AN ARIZONA CORPORATION, AS TRUSTEE, HAS CAUSED ITS CORPORATE NAME TO BE SIGNED BY ITS DULY AUTHORIZED TRUST OFFICER THIS DAY OF JUNE, 1973. US LIFE TITLE COMPANY OF ARIZONA, AS TRUSTEE. BY: *[Signature]* TRUST OFFICER

ACKNOWLEDGEMENT
STATE OF ARIZONA } SS
COUNTY OF MARICOPA }
THIS INSTRUMENT WAS ACKNOWLEDGED BEFORE ME THIS DAY OF JANUARY, 1973 BY CHARLES J. DE BARR, THE TRUST OFFICER OF US LIFE TITLE COMPANY OF ARIZONA, AN ARIZONA CORPORATION. BY: *[Signature]* NOTARY PUBLIC MY COMMISSION EXPIRES



STATE OF ARIZONA }
COUNTY OF MARICOPA }
I hereby certify that the within instrument was filed and recorded in accordance with the laws of the State of Arizona.
Notary Public
My Commission Expires



GROSS AREA 10.42 Acres

S-73-2