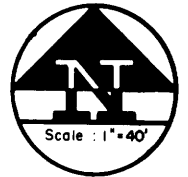
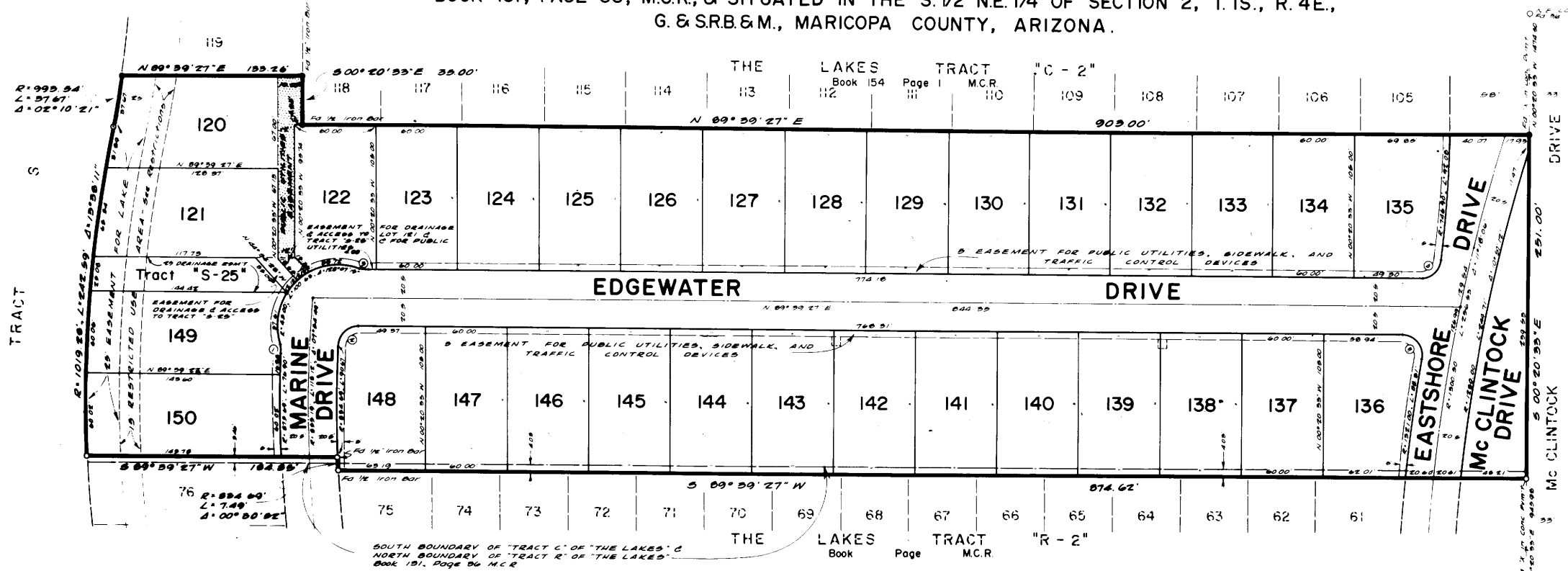


THE LAKES TRACT "C-3"

A SUBDIVISION & PLANNED RESIDENTIAL DEVELOPMENT OF PART OF TRACT "C" & PART OF TRACT "R" OF "THE LAKES",
 BOOK 131, PAGE 36, M.C.R., & SITUATED IN THE S. 1/2 N.E. 1/4 OF SECTION 2, T. 15 S., R. 4 E.,
 G. & S.R.B. & M., MARICOPA COUNTY, ARIZONA.



STATE OF ARIZONA } ss
 County of Maricopa } ss
 I hereby certify that the within instrument was filed and recorded at request of
Henry H. Hagg
 on page 60
 Witness my hand and official seal of the State of Arizona at Phoenix, Arizona, this 13 day of APRIL, 1973.
Eric J. Chast
 County Clerk



- INDICATES CORNER OF THIS SUBDIVISION & CORNER OF "THE LAKES TRACT "C-2"
- INDICATES CORNER OF THIS SUBDIVISION & CORNER OF "THE LAKES TRACT "R-2"
- INDICATES CORNER OF THIS SUBDIVISION & CORNER OF "TRACT "S" OF "THE LAKES", BK. 131, PG. 36, M.C.R.

CURVE DATA			
NO.	EQ. RAD.	LENGTH	DELTA
1	80.00	8.90	18° 22' 40"
2	12.00	22.94	87° 51' 51"
3	80.00	7.08	30° 12' 18"
4	15.00	3.71	82° 28' 18"
5	15.00	26.02	72° 22' 28"

NOTE: CONSTRUCTION WITHIN EASEMENTS SHALL BE LIMITED TO UTILITIES AND WOOD, WIRE OR REMOVABLE SECTION TYPE FENCING.

DEDICATION

STATE OF ARIZONA } ss
 COUNTY OF MARICOPA } ss
 KNOW ALL MEN BY THESE PRESENTS: THAT TRANSAMERICA TITLE INSURANCE COMPANY OF ARIZONA, AN ARIZONA CORPORATION, AS TRUSTEE, HAS SUBDIVIDED UNDER THE NAME OF "THE LAKES TRACT "C-3", A PART OF TRACT "C" & PART OF TRACT "R" OF "THE LAKES", BOOK 131, PAGE 36, M.C.R., & SITUATED IN THE S. 1/2 N.E. 1/4 OF SECTION 2, T. 15 S., R. 4 E., G. & S.R.B. & M., MARICOPA COUNTY, ARIZONA, AS SHOWN PLATTED HEREON AND HEREBY PUBLISHES THIS PLAT AS AND FOR THE PLAT OF SAID "THE LAKES TRACT "C-3" AND HEREBY DECLARES THAT SAID PLAT SETS FORTH THE LOCATION AND GIVES THE DIMENSIONS OF THE LOTS, STREETS & TRACTS CONSTITUTING SAME AND THAT EACH LOT, STREET AND TRACT SHALL BE KNOWN BY THE NUMBER, NAME, OR LETTER GIVEN EACH RESPECTIVELY ON SAID PLAT AND THAT TRANSAMERICA TITLE INSURANCE COMPANY OF ARIZONA, AS TRUSTEE, HEREBY DEDICATES TO THE PUBLIC FOR USE AS SUCH THE STREETS SHOWN ON SAID PLAT AND INCLUDED IN THE ABOVE DESCRIBED PREMISES.

EASEMENTS ARE DEDICATED FOR THE PURPOSES SHOWN. IN WITNESS WHEREOF: TRANSAMERICA TITLE INSURANCE COMPANY OF ARIZONA, AN ARIZONA CORPORATION, AS TRUSTEE, HAS HERETO CAUSED ITS CORPORATE SEAL TO BE AFFIXED AND THE SAME TO BE ATTESTED BY THE SIGNATURE OF THE UNDERSIGNED OFFICER THEREUNTO DULY AUTHORIZED THIS 12 DAY OF MARCH, 1973.

TRANSAMERICA TITLE INSURANCE COMPANY OF ARIZONA, AS TRUSTEE,
 BY Robert Butler
 TRUST OFFICER

ACKNOWLEDGEMENT

STATE OF ARIZONA } ss
 COUNTY OF MARICOPA } ss
 ON THIS THE 12 DAY OF MARCH, 1973, BEFORE ME THE UNDERSIGNED OFFICER APPEARED Richard Buttin WHO ACKNOWLEDGED HIMSELF TO BE A TRUST OFFICER OF TRANSAMERICA TITLE INSURANCE COMPANY OF ARIZONA, AN ARIZONA CORPORATION AND ACKNOWLEDGED THAT HE AS A TRUST OFFICER, BEING DULY AUTHORIZED SO TO DO, EXECUTED THE FOREGOING INSTRUMENT FOR THE PURPOSES THEREIN CONTAINED, BY SIGNING THE NAME OF THE CORPORATION, AS TRUSTEE, BY HIMSELF AS A TRUST OFFICER.

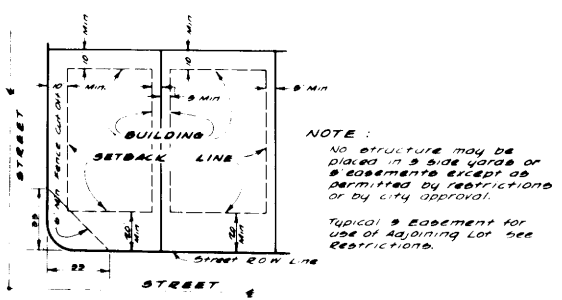
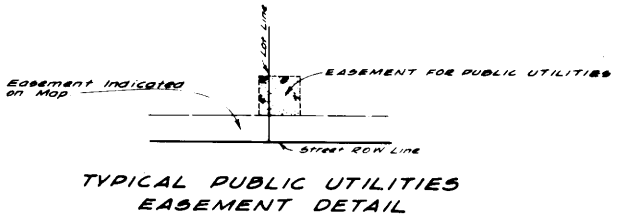
IN WITNESS WHEREOF: I HERETO SET MY HAND AND OFFICIAL SEAL
 BY Robert Butler NOTARY PUBLIC
 MY COMMISSION EXPIRES 3-2-76

ENGINEER'S CERTIFICATE

I, Henry Hagg, HEREBY CERTIFY THAT I AM A REGISTERED CIVIL ENGINEER OF THE STATE OF ARIZONA; THAT THIS MAP, CONSISTING OF ONE SHEET, CORRECTLY REPRESENTS A SURVEY MADE UNDER MY SUPERVISION DURING THE MONTH OF DECEMBER 1972; THAT THE SURVEY IS TRUE AND COMPLETE AS SHOWN; THAT ALL THE MONUMENTS SHOWN ACTUALLY EXIST OR WILL BE SET AS SHOWN; THAT THEIR POSITIONS ARE CORRECTLY SHOWN AND THAT SAID MONUMENTS ARE SUFFICIENT TO ENABLE THE SURVEY TO BE RETRACED.
 DATED 12 March, 1973.
Henry Hagg
 P.E.

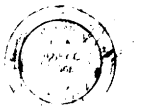
APPROVALS

APPROVED BY THE COUNCIL OF THE CITY OF TEMPE ARIZONA, THIS 25th DAY OF JANUARY, 1973.
 BY David Thompson ATTEST Virginia Thompson
 MAYOR CLERK
 APPROVED BY Don Hall 3/8/73
 CITY ENGINEER DATE
 APPROVED BY Don Hall 3/8/73
 PLANNING DIRECTOR DATE



MINIMUM REQUIREMENTS

- Front Yard 10'
- Street Side Yard 10'
- Interior Side Yard 5'
- Rear Yard 10' EXCEPT 10' 6" FRONT YARD-REAR



S-72.42