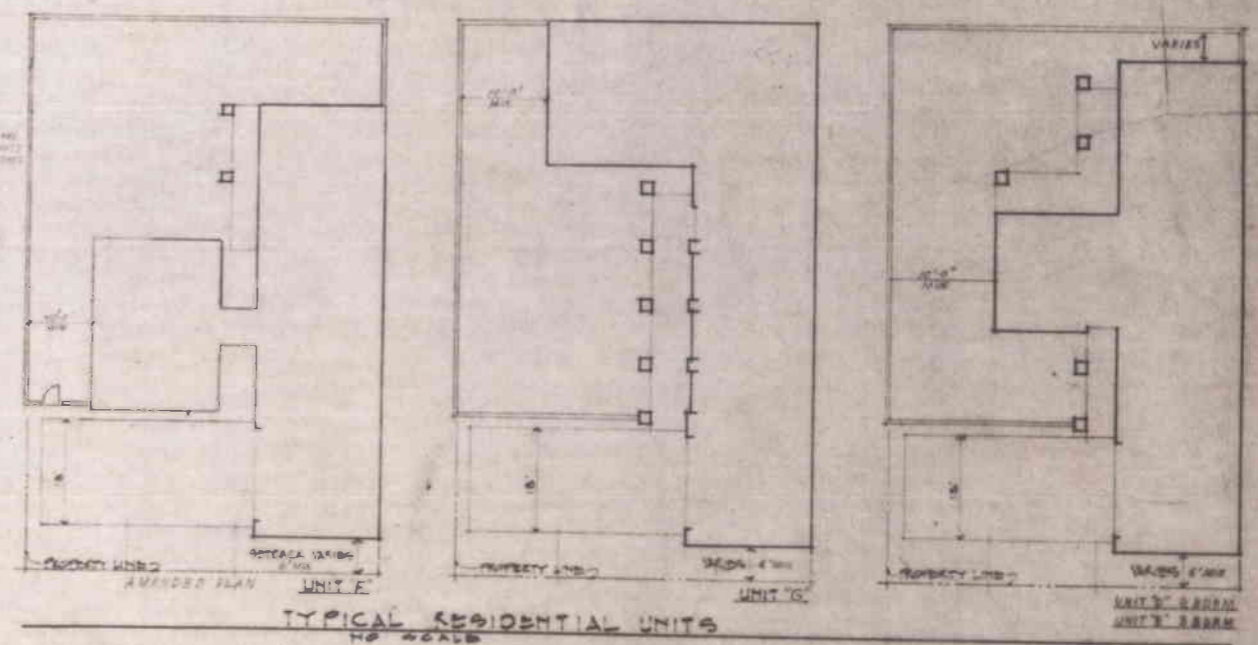
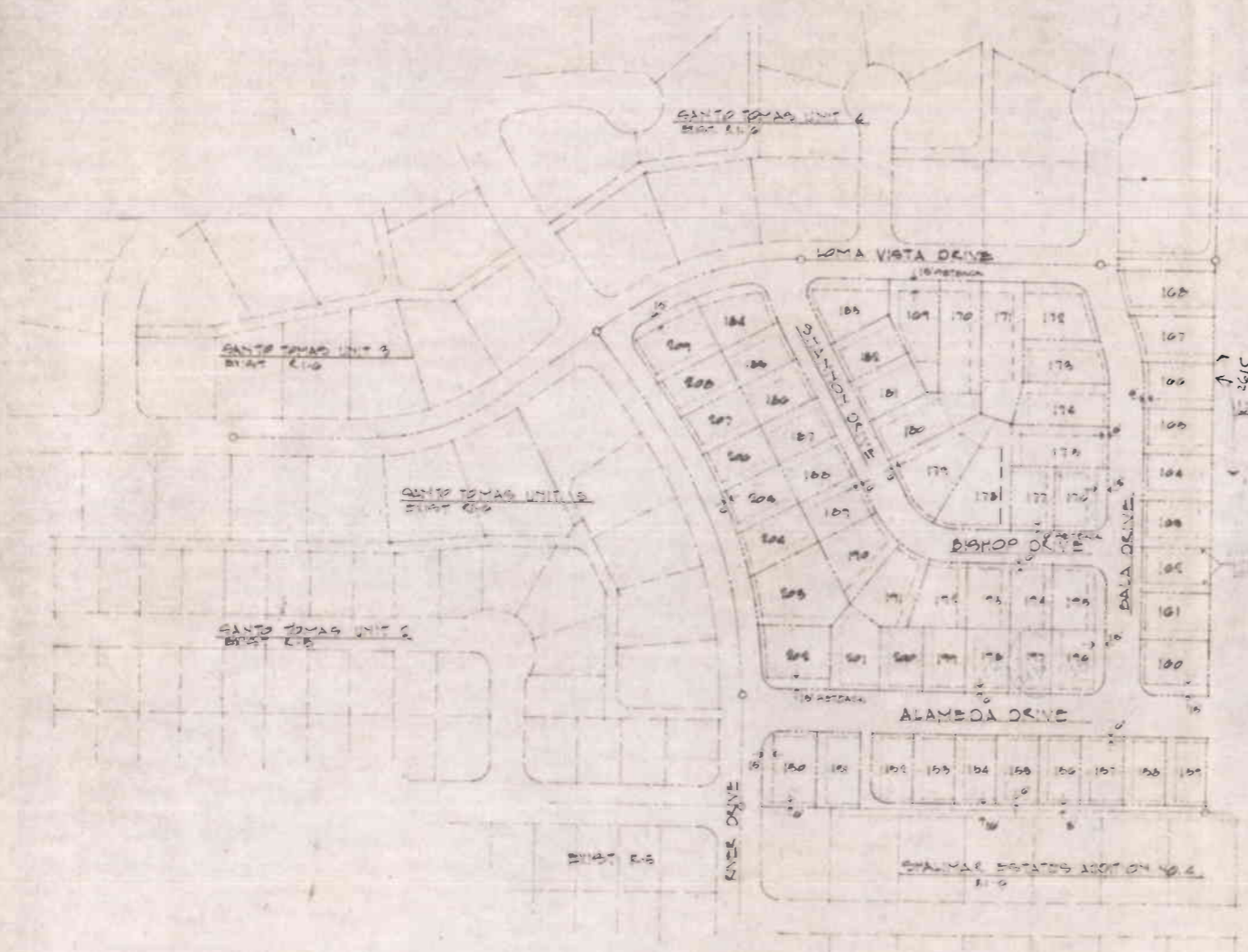
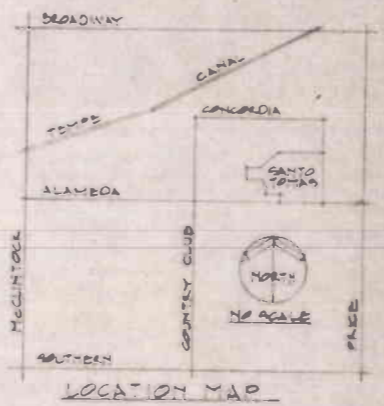


STATE OF ARIZONA
County of Maricopa
I hereby certify that the plat
is correct and true and re-
corded as required.
Douglas P. Peterson
July 24 1974
Notary Public
When's my term and when
will the day and year expire.
TOM FREESTONE
County Clerk
July 23 1974

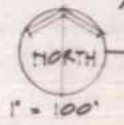
SUMMARY OF PROJECT - UNIT G R-5 PFD (PROPOSED)

GROSS AREA	19.46 ACRES
NET AREA	7.45 ACRES
% OF COVERAGE	
UNIT #1	41.9 %
UNIT #2	44.2 %
UNIT #3	13.9 %
NUMBER OF UNITS	63
UNITS PER GROSS ACRE	4.88
UNITS PER NET ACRE	6.66

- CONDITIONS OF COUNCIL APPROVAL:**
- PUBLIC WORKS DEPT APPROVAL OF ALL STREET OBLIGATIONS, BENCHMARKS, ALLEYS, DRAINAGE, AND OFF-SITE IMPROVEMENTS.
 - THE ALLEY ALONG SOUTH BOUNDARY SHALL RETURN TO ALAMBDA AS SHOWN (LOTS 151-162).
 - ON-SITE DRIVEWAY WIDTHS INCREASED FROM 6 FT TO 10 FT (FOR BOUNDARY ADJACENT).
 - VARIANCES:
 - 5 FT SETBACK AT FRONT PROPERTY LINE (EXCEPT AS NOTED IN CONDITION # 5)
 - 25 FT LOT LINE SETBACK AT SIDE AND REAR PROPERTY LINE (EXCEPT AS NOTED IN CONDITION # 7)
 - SWIMMING POOLS IN FRONT OF REAR YARD
 - 7 FT HIGH PRIVACY WALLS AT FRONT, SIDE AND REAR PROPERTY LINES
 - LANDSCAPING PLANS TO BE APPROVED BY STAFF PLANT SPECIALIST. MIN. FOR THE TYPICAL R-5 HOMES FRONTAGE AREA ONLY TO INCLUDE MIN. OF ONE (1) 15-GALLON WATER TREE, ONE (1) 5' OAK, AND FIVE (5) 18" TALL PLANTS (MIN. 2" WALL-CRAWLING VINES) AND REDWOOD BARK (OR EQUIVALENT) GROUND COVER INCLUDING APPROPRIATE WATERING SYSTEM. LANDSCAPING WILL BE MAINTAINED BY HOMEOWNER AND INSTALLED BY DEVELOPER.
 - MUCH EQUIPMENT TO BE SCREENED FROM PUBLIC VIEW BY INSTALLING GROUND BASED WALLS.
 - LOTS 150-159 SHALL HAVE A MAX. GUYEN (7) FT WALL ALONG THE SOUTH BOUNDARY OF THE PROPERTY. 5 FT SETBACK SHALL BE MIN. 4' X 6' FT.
 - LOTS 163, 164, 167, 171, 172 SHALL MAINTAIN A 15 FT SETBACK ALONG LOMA VISTA DRIVE.



AMENDED FINAL PFD MAP FOR SANTO TOMAS UNIT G
UNIT G - 60 WALLED VILLA HOMES
ADDITION TO PLANNED RESIDENTIAL DEVELOPMENT
PATTERSON DEVELOPMENT CORP.
PHOENIX, ARIZONA 608-1458



RECEIVED
JUL 26 1974
CITY OF TEMPE
PLANNING DEPT.

RECORDED

APPROVED BY: *[Signature]* 7/23/74
PLANNING DIRECTOR DATE
APPROVED BY: *[Signature]* 7/19/74
CITY ENGINEER DATE
APPROVED BY THE COUNCIL OF THE CITY OF TEMPE, ARIZONA
MAYOR: *[Signature]* 1974
CITY CLERK: *[Signature]*
APPROVED BY: *[Signature]* 7/23/74
CITY CLERK DATE

THIS IS TO CERTIFY THAT THE MAP
SHOWN HEREON HAS ACCORDING TO
THE LAWS IN SANTA TOMAS UNIT G
BE RECORDED IN BOOK 170 OF MAPS
PAGE 45, 46, 47.
[Signature]
RECORDING CLERK

S-72-18

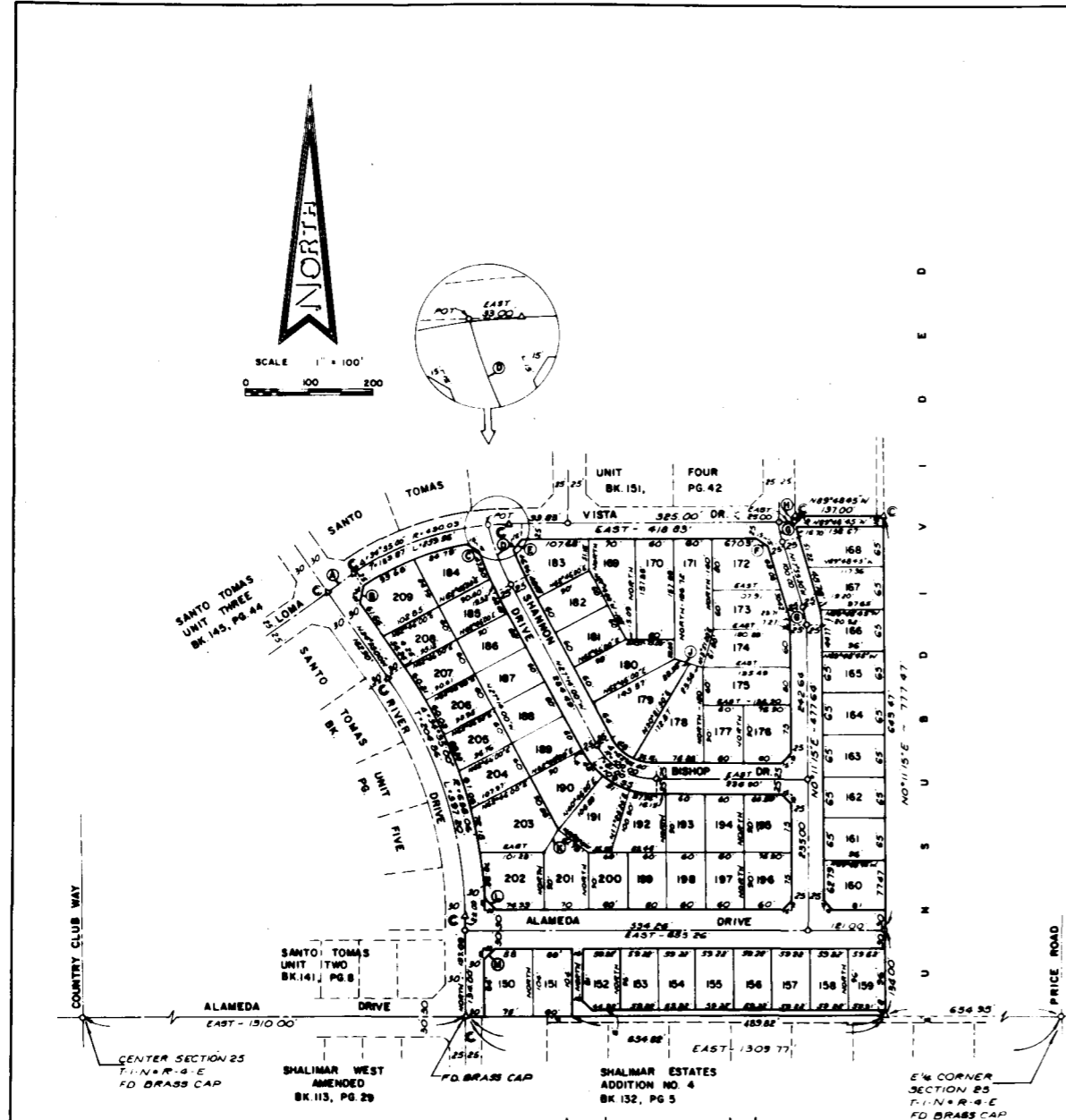
25

SANTO TOMAS UNIT SIX

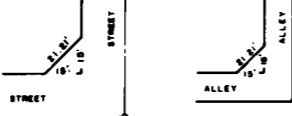
A SUBDIVISION & PLANNED RESIDENTIAL DEVELOPMENT
OF PART OF THE S 1/2 NE 1/4 SECTION 25, T-1-N-R-4-E,
G.B.S.R.B.M., MARICOPA COUNTY, ARIZONA.

HAVILL ENGINEERING CO.
3015 E THOMAS RD PHOENIX, ARIZONA 85632

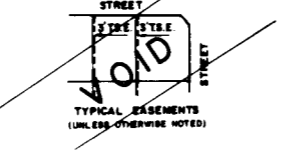
City of Tempe
MAR 4 1974
Boys - 170
45
Lobby Corp



ADDITIONAL DATA				
BEARING	LENGTH	DELTA	RADIUS	TANGENT
A N85°20'00"E	70.00			
B N40°25'00"E	28.28			
C N10°25'00"W	28.28			
D N85°20'00"E	28.28			
E N85°20'00"E	17.72			
F N85°20'00"E	28.28			
G N85°20'00"E	28.28			
H N85°20'00"E	28.28			
I N85°20'00"E	28.28			
J N85°20'00"E	28.28			
K N85°20'00"E	28.28			
L N85°20'00"E	28.28			
M N85°20'00"E	28.28			
N N85°20'00"E	28.28			
O N85°20'00"E	28.28			
P N85°20'00"E	28.28			
Q N85°20'00"E	28.28			
R N85°20'00"E	28.28			
S N85°20'00"E	28.28			
T N85°20'00"E	28.28			
U N85°20'00"E	28.28			
V N85°20'00"E	28.28			
W N85°20'00"E	28.28			
X N85°20'00"E	28.28			
Y N85°20'00"E	28.28			
Z N85°20'00"E	28.28			



TYPICAL CUTOFF DETAIL (CITY OF TEMPE)
(UNLESS OTHERWISE NOTED)



TYPICAL EASEMENTS
(UNLESS OTHERWISE NOTED)

- A INDICATES CORNER THIS SUBDIVISION SET OR FOUND
PIPE OR OTHER MONUMENT, AS INDICATED
(FO = FOUND, BC = BRASS CAP, MH = HANDHOLE)
- C INDICATES COMMON CORNER OF THIS SUBDIVISION
AND ADJACENT SUBDIVISION(S)
- T.S.E. INDICATES TYPICAL SERVICE EASEMENTS TO MOUNTAIN BELL,
ARIZONA PUBLIC SERVICE AND SALT RIVER PROJECT FOR
TELEPHONE, GAS AND ELECTRIC FACILITIES
- ALL UTILITIES TO BE INSTALLED UNDERGROUND

STATE OF ARIZONA }
COUNTY OF MARICOPA } ss
KNOW ALL MEN BY THESE PRESENTS
THAT THE ARIZONA TITLE INSURANCE AND TRUST COMPANY, AN ARIZONA
CORPORATION, AS TRUSTEE, HAS SUBDIVIDED UNDER THE NAME OF SANTO TOMAS
UNIT SIX, PART OF THE S 1/2 NE 1/4 SECTION 25, T-1-N-R-4-E, G.B.S.R.B.M., MARICOPA
COUNTY, ARIZONA, SHOWN HEREON, AND HEREBY PUBLISHES THIS PLAT AS AND FOR THE PLAT OF
SAID SANTO TOMAS UNIT SIX, AND HEREBY DECLARES THAT SAID PLAT SETS
FORTH THE LOCATION AND BIVES THE DIMENSIONS OF THE LOTS, STREETS AND ALLEYS
CONSTITUTING SAID UNIT SIX, AND THAT EACH LOT AND EACH STREET SHALL BE KNOWN BY THE
NUMBER OR NAME THAT IS GIVEN TO EACH, RESPECTIVELY, ON SAID PLAT, AND THE
ARIZONA TITLE INSURANCE AND TRUST COMPANY, AS TRUSTEE, HEREBY DEDICATES
TO THE PUBLIC, FOR USE AS SUCH, THE STREETS AND ALLEYS SHOWN ON SAID PLAT AND INCLUDED
IN THE ABOVE DESCRIBED PREMISES EASEMENTS ARE HEREBY DEDICATED FOR THE PURPOSES AS
SHOWN HEREON

WE WITNESS WHEREOF, THE ARIZONA TITLE INSURANCE AND TRUST COMPANY, AS
TRUSTEE, HAS HERETO CAUSED ITS CORPORATE NAME TO BE SIGNED BY THE UNDERSIGNED
OFFICERS THEREUNTO DULY AUTHORIZED THIS 13th DAY OF FEBRUARY 1974

ARIZONA TITLE INSURANCE AND TRUST COMPANY, AS TRUSTEE
BY _____ VICE PRESIDENT ATTEST _____ ASSISTANT SECRETARY

STATE OF ARIZONA }
COUNTY OF MARICOPA } ss
ON THIS 13th DAY OF FEBRUARY 1974, BEFORE ME THE UNDERSIGNED OFFICER,
PERSONALLY APPEARED _____ AND _____
WHO ACKNOWLEDGED THEMSELVES TO BE VICE PRESIDENT AND ASSISTANT SECRETARY,
RESPECTIVELY, OF THE ARIZONA TITLE INSURANCE AND TRUST COMPANY, A CORPORATION,
AND THAT THEY, AS SUCH OFFICERS, RESPECTIVELY, BEING DULY AUTHORIZED SO TO DO, EXECUTED
THE FOREGOING INSTRUMENT FOR THE PURPOSES THEREIN CONTAINED BY SIGNING THE NAME OF
THE CORPORATION, AS TRUSTEE, BY THEMSELVES AS SUCH OFFICERS, RESPECTIVELY

IN WITNESS WHEREOF, I HERETO SET MY HAND AND OFFICIAL SEAL
NOTARY PUBLIC _____
MY COMMISSION EXPIRES _____

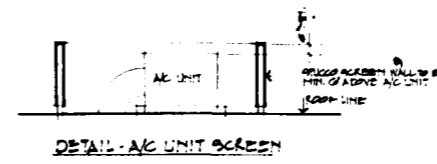
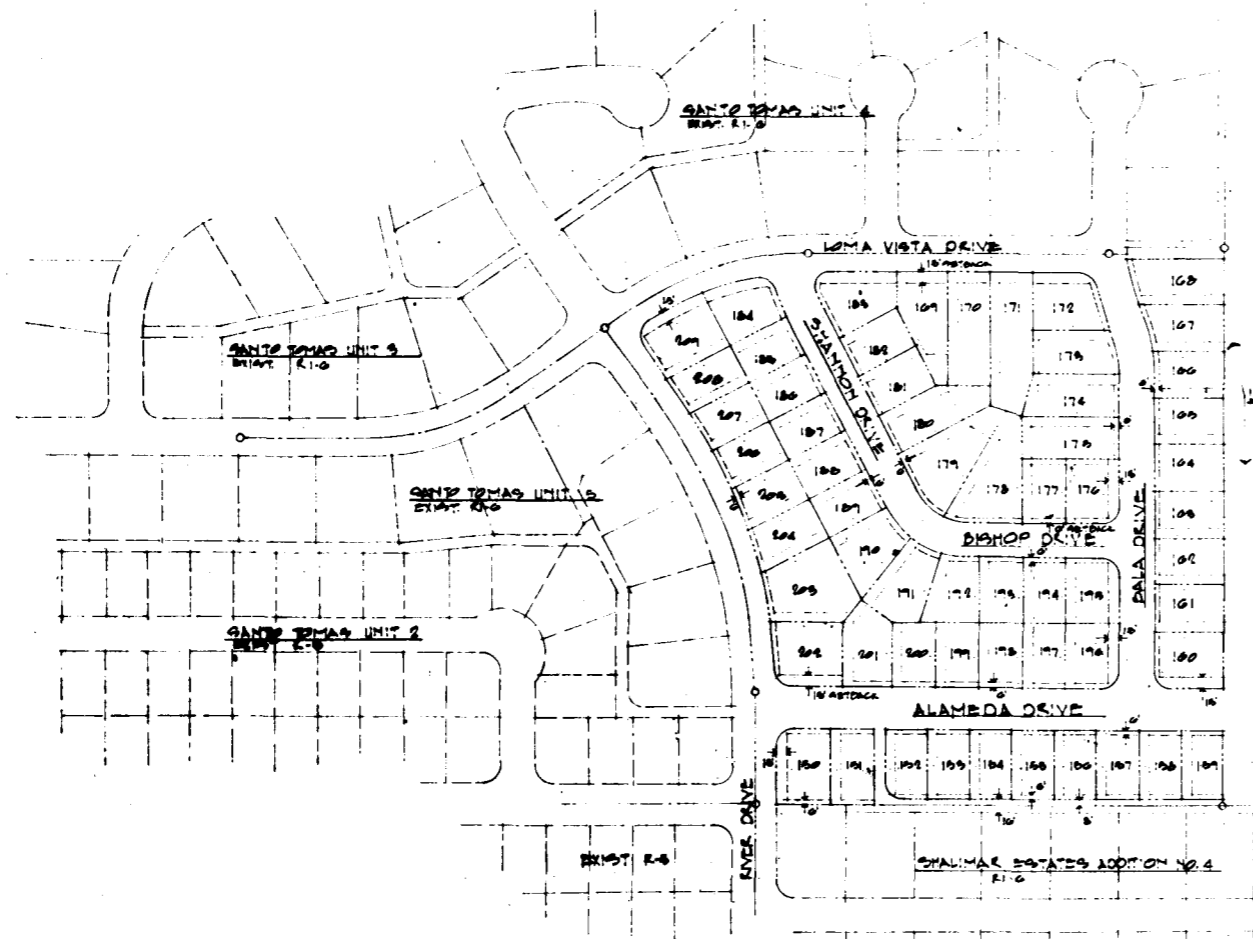
I, MELVIN R. HAVILL, HEREBY CERTIFY THAT I AM A REGISTERED CIVIL ENGINEER OF THE
STATE OF ARIZONA, THAT THIS MAP, CONSISTING OF 1 SHEET, CORRECTLY REPRESENTS
A SURVEY MADE UNDER MY SUPERVISION DURING THE MONTH OF APRIL, 1973,
AND THAT THE SURVEY IS TRUE AND COMPLETE AS SHOWN, THAT ALL THE MONUMENTS
SHOWN ACTUALLY EXIST OR WILL BE SET AS SHOWN, THAT THEIR POSITIONS ARE
CORRECTLY SHOWN AND THAT SAID MONUMENTS ARE SUFFICIENT TO ENABLE THE SURVEY
TO BE RETRACED

Melvin R. Havill 2-26-74
MELVIN R. HAVILL
REG. CIVIL ENGINEER
#12,044

APPROVALS
APPROVED BY [Signature] 3/4/74
PLANNING DIRECTOR DATE

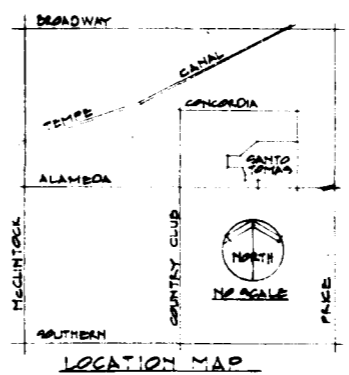
APPROVED BY [Signature] 3/4/74
CITY ENGINEER DATE

APPROVED BY THE COUNCIL OF THE CITY OF TEMPE, ARIZONA
THIS 13th DAY OF FEBRUARY 1974
BY [Signature] ATTEST [Signature]
CITY CLERK

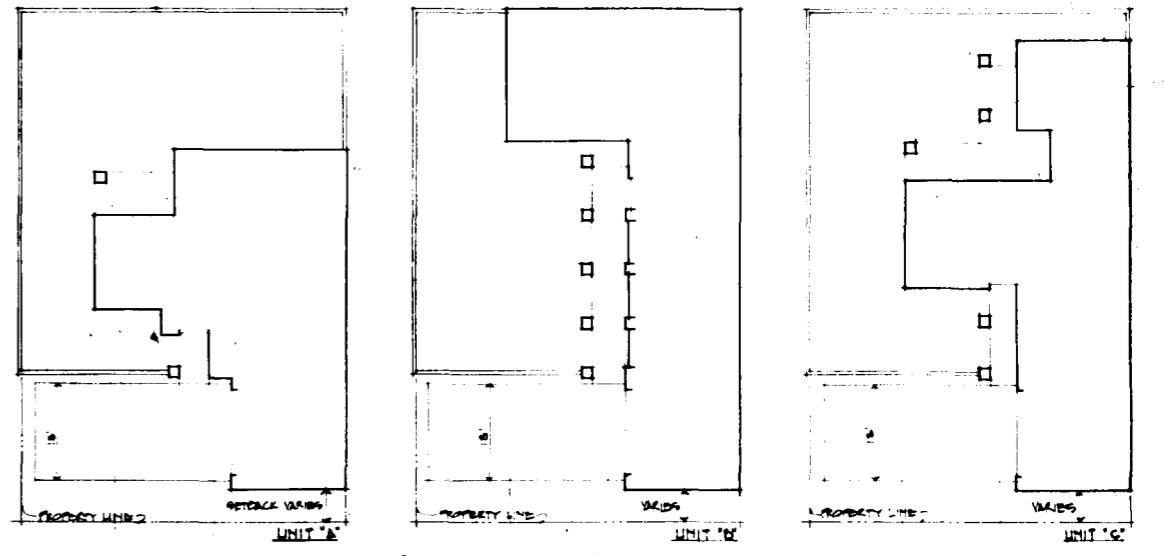


SUMMARY OF PROJECT - UNIT 6 R-B PRO (PROPOSED)

GROSS AREA	19.46 ACRES
NET AREA	9.46 ACRES
% OF COVERAGE	
UNIT 'A'	87.2 %
UNIT 'B'	60.5 %
UNIT 'C'	89.5 %
NUMBER OF UNITS	60
UNITS PER GROSS ACRE	4.06
UNITS PER NET ACRE	6.06



- CONDITIONS OF COUNCIL APPROVAL:**
- PUBLIC WORKS DEPT APPROVAL OF ALL OFFSET DEDICATIONS, EASEMENTS, ALLEYS, DRAINAGE AND OTHER IMPROVEMENTS.
 - THE ALLEY ALONG SOUTH BOUNDARY SHALL RETURN TO ALAMEDA AS SHOWN (LOTS 151-192).
 - ON SITE DRIVEWAY WIDTHS INCREASED FROM 6 FT TO 10 FT (PER ORDINANCE REQMT).
 - VARIANCES:
 - 0-0' SETBACK AT FRONT PROPERTY LINE (EXCEPT AS NOTED IN CONDITION # 8)
 - 0' ZERO LOT LINE SETBACK AT SIDE AND REAR PROPERTY LINE (EXCEPT AS NOTED IN CONDITION # 7)
 - SWIMMING POOLS IN FRONT OR REAR YARD.
 - 7-0' HIGH PRIVACY WALLS AT FRONT AND REAR PROPERTY LINES.
 - LANDSCAPING PLANS TO BE APPROVED BY STAFF PRIOR TO COUNCIL ACTION FOR THE TYPICAL TYPICAL HOMES PRECINCT AREAS ONLY TO INCLUDE: (A) 5' GALVA SHADY TREE, OR THE (B) 5' GALVA AND SEVEN (7) 1' GALVA PLANTS (MIN. TEN (10) CLIMBING VINES) AND REDWOOD BARK (OR EQUIVALENT) GROUND COVER, INCLUDING APPROPRIATE WATERING SYSTEM. LANDSCAPING WILL BE MAINTAINED BY HOMEOWNER AND INSTALLED BY DEVELOPER.
 - MECH EQUIPMENT TO BE SCREENED FROM PUBLIC VIEW AS SHOWN ON DETAILS OF WHICH TO BE APPROVED BY CITY COUNCIL.
 - LOTS 156-159 SHALL HAVE A MAX. SEVEN (7) FT WALL ALONG THE SOUTH BOUNDARY OF THE PROPERTY. 2-0' SETBACK SHALL BE MIN. SIX (6) FT.
 - A LOTS 155, 161, 170, 171, 172 SHALL MAINTAIN A 10 FT. SETBACK ALONG LOMA VISTA DRIVE.



FINAL PRO MAP FOR SANTO TOMAS UNIT 6
 UNIT 6 - 60 WALLBO VILLA HOMES
 ADDITION TO PLANNED RESIDENTIAL DEVELOPMENT
 PATTERSON DEVELOPMENT CORP. PHOENIX, ARIZONA 308-1408
 CADLE ASSOCIATES - ARCHITECTURE, PLANNING 2217-0426, ARIZONA 949-0922

MAR 4 1974 - 982
 STATE OF ARIZONA
 County of Maricopa
 I hereby certify that the within instrument is a true and correct copy of the original as recorded in the public records of the County of Maricopa, Arizona.
 City of Tempe
 Mayor - 170
 City Clerk
 City Attorney
 City Engineer
 City Auditor
 City Treasurer
 City Manager