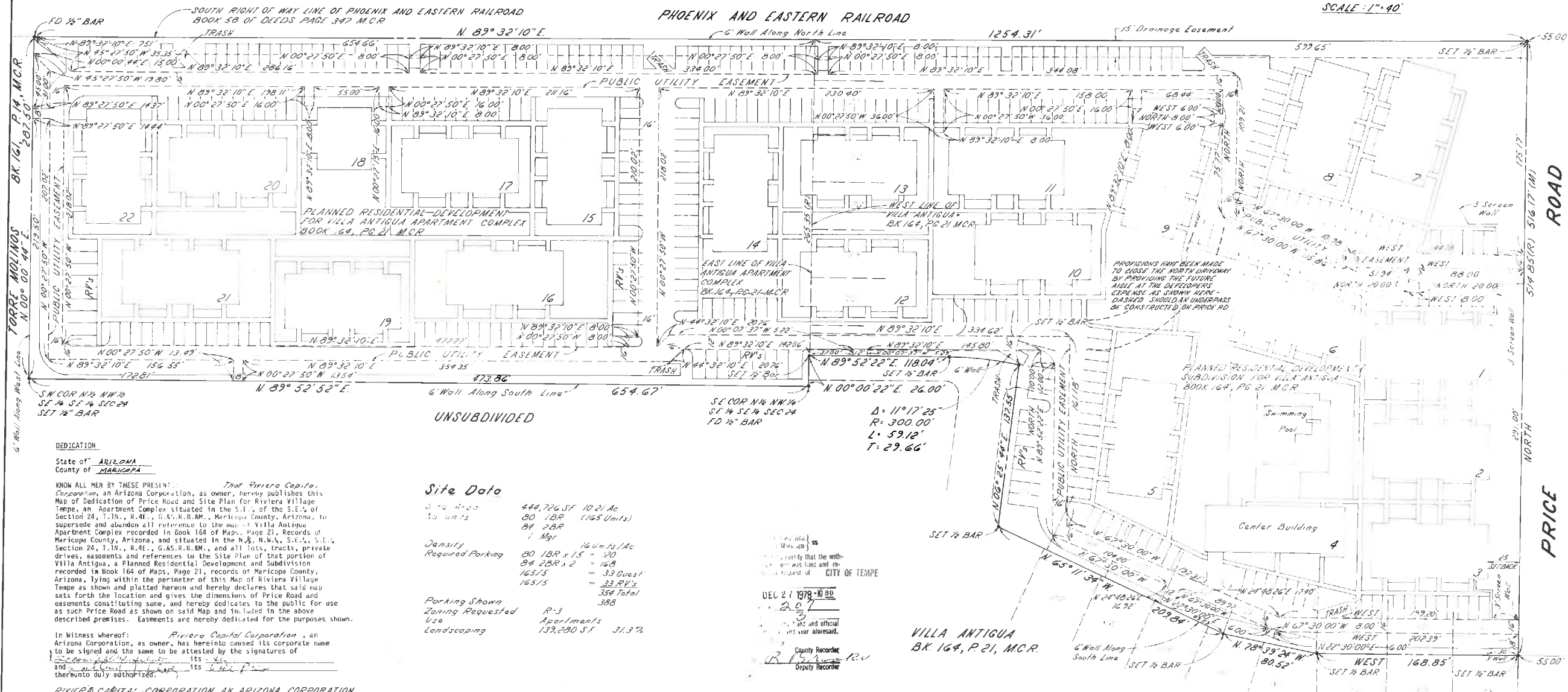
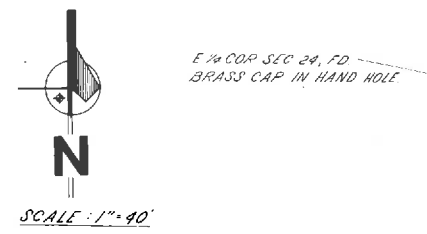


MAP OF ABANDONMENT OF VILLA ANTIGUA APARTMENT COMPLEX AND A PORTION OF VILLA ANTIGUA SUBDIVISION & P.A.D. AND MAP OF DEDICATION OF PRICE ROAD

RIVIERA VILLAGE TEMPE

AN APARTMENT COMPLEX
A PORTION OF THE SE 1/4 SE 1/4, SEC. 24, T.1N., R. 4E.,
G.S.R.B.&M., MARICOPA COUNTY, ARIZONA



DEDICATION

State of ARIZONA
County of MARICOPA

KNOW ALL MEN BY THESE PRESENTS: That Riviera Capital Corporation, an Arizona Corporation, as owner, hereby publishes this Map of Dedication of Price Road and Site Plan for Riviera Village Tempe, an Apartment Complex situated in the S.E. 1/4 of the S.E. 1/4 of Section 24, T.1N., R.4E., G.S.R.B.&M., Maricopa County, Arizona, to supersede and abandon all references to the map of Villa Antigua Apartment Complex recorded in Book 164 of Maps, Page 21, Records of Maricopa County, Arizona, and situated in the N.E. 1/4, N.W. 1/4, S.E. 1/4, S.E. 1/4 Section 24, T.1N., R.4E., G.S.R.B.&M., and all lots, tracts, private drives, easements and references to the Site Plan of that portion of Villa Antigua, a Planned Residential Development and Subdivision recorded in Book 164 of Maps, Page 21, records of Maricopa County, Arizona, lying within the perimeter of this Map of Riviera Village Tempe as shown and platted hereon and hereby declares that said map sets forth the location and gives the dimensions of Price Road and easements constituting same, and hereby dedicates to the public for use as such Price Road as shown on said Map and included in the above described premises. Easements are hereby dedicated for the purposes shown.

In Witness whereof: Riviera Capital Corporation, an Arizona Corporation, as owner, has hereinto caused its corporate name to be signed and the same to be attested by the signatures of _____ its _____ and _____ its _____ thereunto duly authorized.

RIVIERA CAPITAL CORPORATION, AN ARIZONA CORPORATION,
OWNER
by: Lorraine M. Silver

Attested: Lorraine M. Silver

ACKNOWLEDGEMENT
State of ARIZONA
County of MARICOPA
On this the 15TH Day of DECEMBER, 1978, Before me, the undersigned officer, personally appeared CORTLAND J. SILVER and LORRAINE M. SILVER, who acknowledged themselves to be VICE PRESIDENT and SECRETARY respectively, of Riviera Capital Corporation, an Arizona Corporation, as owner, and acknowledged that they, as such officers, being authorized so to do, executed the foregoing instrument for the purpose therein contained.
In Witness whereof: I hereunto set my hand and official seal
Dorothy J. Larson March 6, 1980
Notary Public My Commission Expires

Site Data

Area	444,726 SF 10.21 Ac
No. units	80 IBR (165 Units)
	84 2BR
Density	1 Mgr 16 Units/Ac
Required Parking	80 IBR x 1.5 = 120
	84 2BR x 2 = 168
	165/5 = 33 Quasi'
	165/5 = 33 P.V.'s
	354 Total
Parking Shown	388
Zoning Requested	R-3
Use	Apartments
Landscaping	139,280 SF 31.3%

APPROVALS

Approved By The Council Of The City Of Tempe, Arizona
This 30TH Day Of November, 1978.

By: Harry E. Mitchell Mayor Attest: Pauline J. Sempitron Clerk

Approved By The City Engineer Joe M. Johnson

Approved By The City Planning Director Don Hall

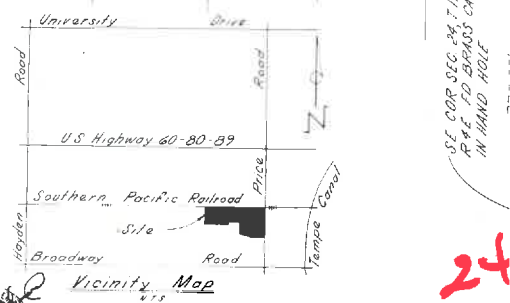
DEC 27 1978 - 10 80
County Recorder
Deputy Recorder

VILLA ANTIGUA
BK 164, P. 21, M.C.R.

ENGINEERS CERTIFICATE

I Robert R. Johnson hereby Certify that I Am A Registered Civil Engineer Of The State Of Arizona, That This Map Consisting Of One Sheet Correctly Represents A Survey Made Under My Supervision During The Month Of March, 1978; That The Survey Is True And Complete As Shown; That All The Monuments Actually Exist Or Will Be Set As Shown; That Their Positions Are Correctly Shown And That Said Monuments Are Sufficient To Enable The Survey To Be Retraced.

Date: Dec 4, 1978
Robert R. Johnson
Registered Civil Engineer #6391



ASSOCIATED ENGINEERS
Civil Consultants
Phoenix 278-9 Arizor

24