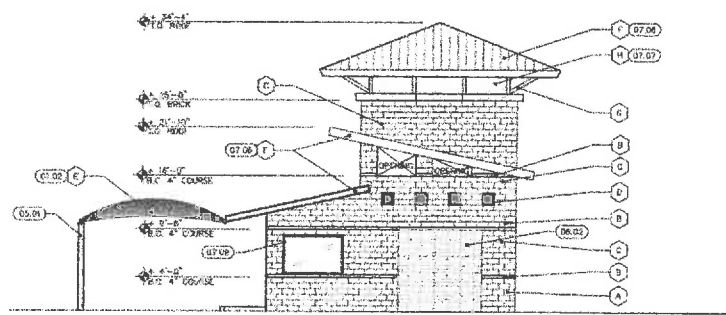


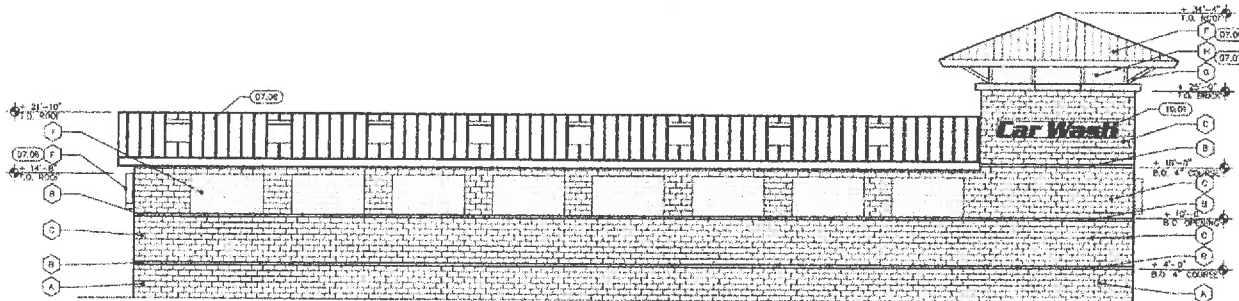
3 SIDE ELEVATION #1

3/16" = 1'-0"



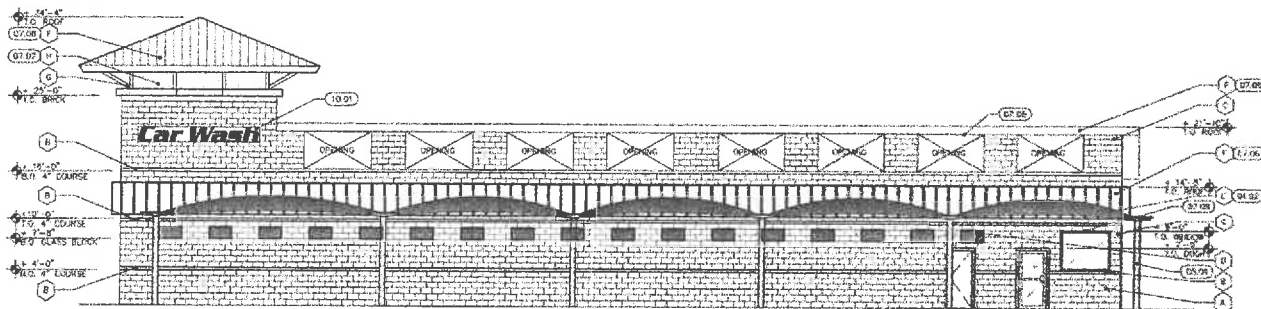
4 SIDE ELEVATION #2

3/16" = 1'-0"



2 REAR ELEVATION

3/16" = 1'-0"



1 FRONT ELEVATION

3/16" = 1'-0"

KEYNOTES

- 01.02 CANOPY (SPRINKLERED)
- 05.01 6"x8" TUBE STEEL
- 07.06 STANDING SEAM METAL ROOF SYSTEM
- 07.07 ACRYLIC STUCCO FINISH
- 07.09 ANODIZED ALUMINUM STOREFRONT
- 08.02 OVERHEAD ROLL-UP DOOR
- 10.01 SIGNAGE REQUIRES SEPERATE PERMITS, SHOWN FOR REFERENCE ONLY

NOTE: CANOPY SPRINKLERS UNDER SEPERATE PERMIT

EXTERIOR FINISHES

	MATERIAL	COLOR
A	SUPERLITE PLAIN SPLIT	-
B	SUPERLITE OAK CREEK POUNDERS	-
C	SUPERLITE BONE SMOOTH	-
D	GLASS BLOCK	-
E	SUN SPOFFS SHADERSURE FABRIC	LAGUNA BLUE
F	UNA CLAD KYNAR 500 STEEL	CLASSIC COPPER
G	METAL FABRIC	SHERWIN WILLIAM #8W2307 'RED BARN'
H	UNA CLAD KYNAR 500 STEEL	BENJAMIN MOORE #207-40 'DRIFTWOOD'
I	SUPERLITE TERRA BROWN SMOOTHFACE	-

REC07057

PAD07023

DS061040

MARK	DATE	REVISIONS	INITIAL
▲			
▲			
▲			
▲			

EXTERIOR ELEVATIONS

CARWASH  
1406 W. UNIVERSITY DR.  
TEMPE, AZ 85281

PAPAGO  
ENTERPRISES



3739 E. HELL Rd.  
PHOENIX, AZ 85032  
602-787-0035  
FAX: 602-787-0400

RHL ARCHITECTURE • PLANNING • ENVIRONMENTAL SERVICES  
8991 E. CAMELBACK ROAD, SUITE B-102, SCOTTSDALE, AZ 85261  
JESSE MACIAS, REGIONAL MANAGER (480) 945-3040

PHASE	REVIEW	INITIAL	DATE
PRELIMINARY			04/24/07
PLANNING			04/24/07
DESIGN			
BIDD PERMIT			
GENERAL DD			
PERMIT REVIEW			
CONSTRUCTION			

DR: BT, JKL  
APPR:  
RHL: J. CHL00007.0  
SHEET

DS061040

PAD07023

REC07057