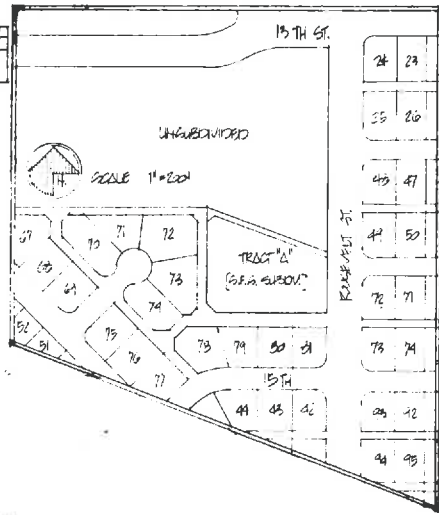


MEMPHIS sun earth syzygy dwellings

DIVISION OF A PART OF THE N.W. 1/4, S.E. 1/4, SEC. 21, T. 1N, R. 4E.



PROJECT SUN EARTH SYZYGY DWELLINGS
 ADDRESS 1420 SOUTH ROOSEVELT TEMPE AZ. 85281
 DEVELOPERS JAMES HOFFMANN, ELIZABETH HOFFMANN,
 DESIGNER JAMES HOFFMANN, E.C.O. GROUP INC 114 MAPLE
 DISTRICT PRELIMINARY # 422771

LEGAL DESCRIPTION
 A SUBDIVISION OF TRACT "A" OF MARILYN ANN UNIT ONE ACCORDING TO BOOK 84 OF MAPS PAGE 49 RECORDS OF MARICOPA COUNTY ARIZONA AND THAT PORTION OF SAID UNIT ONE AS DESCRIBED BY CITY OF TEMPE ORDINANCE NUMBER 8004 RECORDED IN PACKET 12087, PAGE 815 RECORDS OF MARICOPA COUNTY ARIZONA. GRASS AREA .07 ACRES
 OWNER E.C.O. GROUP INCORPORATED 114 S MAPLE & 35 W. 24TH ST. TEMPE, AZ. ZIP 85281, PHONE 948-3955

ENGINEERING PERFORMED BY
 JEFFREY A. ARACANTHERE P.E.
 5044 B. VERNON AVE.
 SCOTTSDALE, ARIZONA, ZIP 85257
 PHONE 949-88337

CERTIFICATION
 I JEFFREY A. ARACANTHERE DO HEREBY CERTIFY THAT I AM A REGISTERED ENGINEER OF THE STATE OF ARIZONA, THAT THIS MAP, CONSISTING OF ONE SHEET, CORRECTLY REPRESENTS A SURVEY MADE UNDER MY SUPERVISION, THAT THE SURVEY IS TRUE AND COMPLETE AS SHOWN; THAT ALL THE MONUMENTS SHOWN LOCALLY EXIST OR HAVE BEEN SET AS SHOWN; THAT THEIR POSITIONS ARE CORRECTLY SHOWN AND THAT SAID MONUMENTS ARE SUFFICIENT TO ENABLE THE SURVEY TO BE REPRODUCED. DATE: 5/8/80



COMMON TRACTS
 TRACT "B" CENTRAL GREENSPACE BOUNDED ON EAST BY LOT ONE, WEST BY LOTS FIVE AND SIX, NORTH BY TRACT "A" AND LOT THREE, SOUTH TO ALLEY.
 TRACT "C" SURVEY DESIGNER BOUNDARY ON EAST BY LOT TWO, WEST BY LOT THREE, NORTH BY S.E.S. PROPERTY LINE, SOUTH BY TRACT "B".
 TRACT "D" RECREATION AREA THE EAST STRIP BETWEEN LOTS FOUR AND FIVE.
 TRACT "E" COMMON PARKING AND GREEN AREA TWENTY-TWO FOOT STRIP BOUNDARY OF S.E.D. DIVISION, EXCLUDING WEST PORTION OF LOT FIVE BOUNDARY ON WEST, SOUTH AND NORTH BY S.E.S. SUBDIVISION, UNRECORDED.
 TRACT "F" PORTION OF CITY SUBDIVISION THE EAST STRIP BETWEEN LOTS TWO AND TWO.

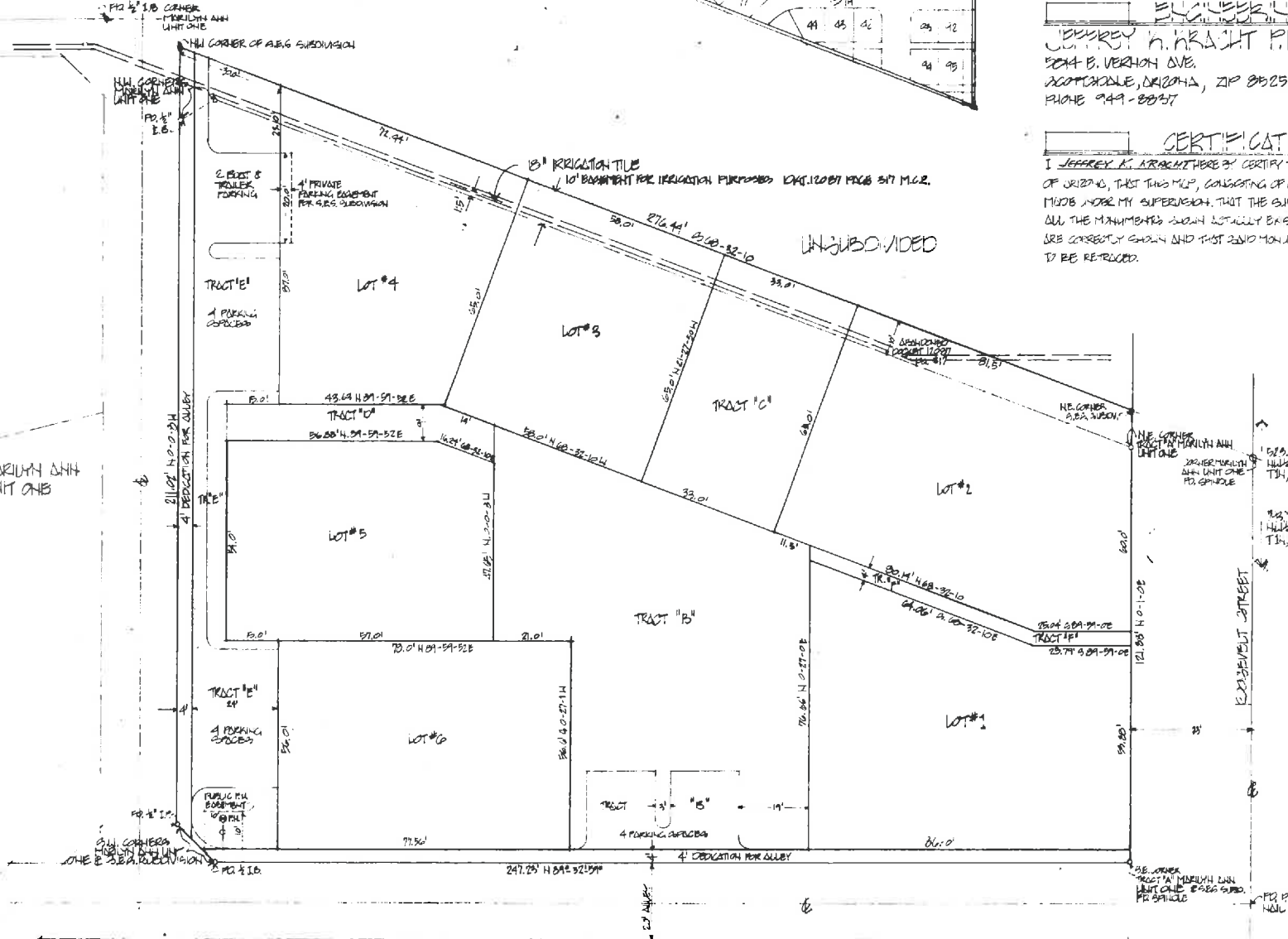
DEPOSITION CLAUSE
 READ AND BELIEVED BY THESE PRESENTS:
 THAT E.C.O. GROUP INC. AN ARIZONA CORPORATION HEREBY PURCHASE THIS PLAT OF MEMPHIS SUN EARTH SYZYGY'S SUBDIVISION, AND HEREBY DECLARE THAT SAID PLAT BEARS FAITH TO THE ORIGINAL INTENTIONS OF SAID SUBDIVISION, LOTS AND TRACTS AND SAID LOT AND TRACT BE KNOWN BY THIS LETTER OR NUMBER GIVEN THEM RESPECTIVELY IN SAID PLAT. MONUMENTS ARE LOCATED FOR PURPOSES SAID AND THEIR POSITIONS ARE SET AS SHOWN IN SAID PLAT AND TO BE REPRODUCED IN THE FUTURE IN THE EVENT THE MONUMENTS FOR SAID PLAT BECOME DESTROYED.

IN WITNESS WHEREOF: E.C.O. GROUP INC. AN ARIZONA CORPORATION HAS CAUSED THEIR SEAL TO BE HEREIN AFFIXED. THIS 8th DAY OF May, 1980. E.C.O. GROUP INC.
 NUMBER AND DATE: 5/8/80
 IN WITNESS WHEREOF: I HEREBY SET MY HAND AND SEAL.
 Mel Portner
 Notary Public - State of Arizona - Exp. 12/31/81

APPROVALS
 APPROVED BY THE CITY ENGINEER OF THE CITY OF TEMPE, ARIZONA THIS 26th DAY OF May, 1980.
 BY: *Henry E. Mitchell* CITY ENGINEER
 APPROVED BY: *Tom Quinn* CITY ENGINEER 5-12-80 DATE
 APPROVED BY: *Don Hall* PLANNING DIRECTOR 5/14/80 DATE
 MAY 14 1980-1 84

STATE OF ARIZONA
 County of Maricopa
 I hereby certify that the within instrument was filed and recorded as follows:
 City of Tempe
 Book 223
 Page 15
 Recorded
 Jerry D. King
 Recorder

RECORDED



SCALE 1" = 20'-0"
 LEGEND
 ○ - INDICATES CORNER OF TRACT "A" MARILYN ANN UNIT ONE
 ● - INDICATES CORNER OF S.E.S. SUBDIVISION

879.20
 a+b

